

Appendix J
EJ Screen Community Reports

EJSCREEN COMMUNITY REPORTS

UNITED STATES ENVIRONMENTAL PROTECTION AGENCY

Scotts Valley Band of Pomo Indians Fee-to-Trust and Casino Project

Solano County, CA

Requested By:

Acorn Environmental
5170 Golden Foothill Parkway
El Dorado Hills, CA 95762
916.235.8224
www.acorn-env.com



Source: https://ejscreen.epa.gov/mapper/ejscreen_SOE.aspx

Date Accessed: June 2024

EJScreen Community Report

This report provides environmental and socioeconomic information for user-defined areas, and combines that data into environmental justice and supplemental indexes.

Vallejo, CA

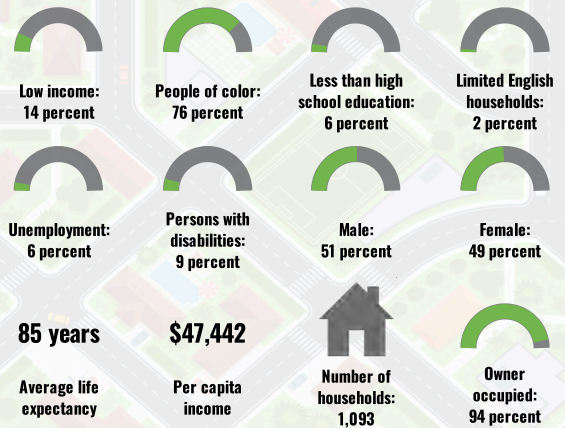
Tract: 06095250106
 Population: 3,692
 Area in square miles: 7.16

Dynamic map initially showing the user-selected area

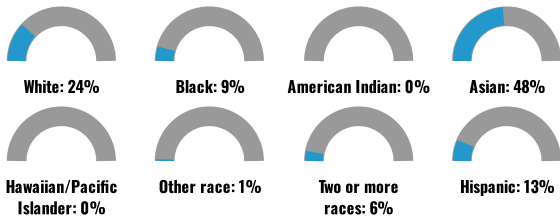
COMMUNITY INFORMATION

LANGUAGES SPOKEN AT HOME

LANGUAGE	PERCENT
English	65%
Spanish	5%
Other Indo-European	1%
Chinese (including Mandarin, Cantonese)	3%
Vietnamese	5%
Tagalog (including Filipino)	19%
Other Asian and Pacific Island	1%
Arabic	1%
Total Non-English	35%



BREAKDOWN BY RACE



BREAKDOWN BY AGE



LIMITED ENGLISH SPEAKING BREAKDOWN



Notes: Numbers may not sum to totals due to rounding. Hispanic population can be of any race. Source: U.S. Census Bureau, American Community Survey (ACS) 2017-2021. Life expectancy data comes from the Centers for Disease Control.

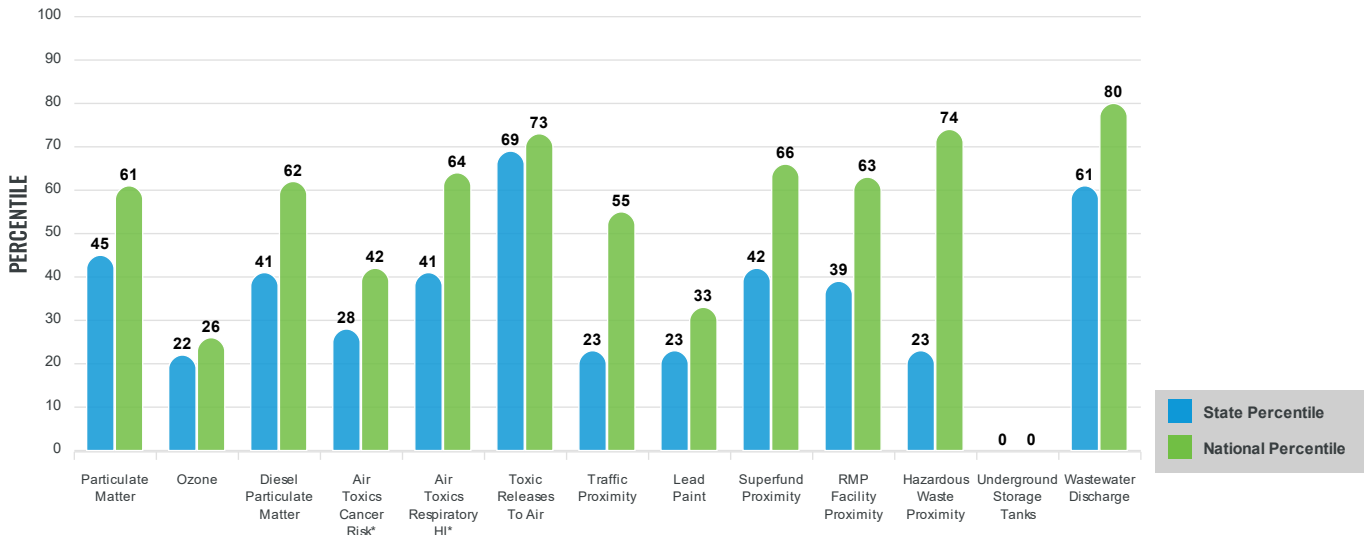
Environmental Justice & Supplemental Indexes

The environmental justice and supplemental indexes are a combination of environmental and socioeconomic information. There are thirteen EJ indexes and supplemental indexes in EJScreen reflecting the 13 environmental indicators. The indexes for a selected area are compared to those for all other locations in the state or nation. For more information and calculation details on the EJ and supplemental indexes, please visit the [EJScreen website](#).

EJ INDEXES

The EJ indexes help users screen for potential EJ concerns. To do this, the EJ index combines data on low income and people of color populations with a single environmental indicator.

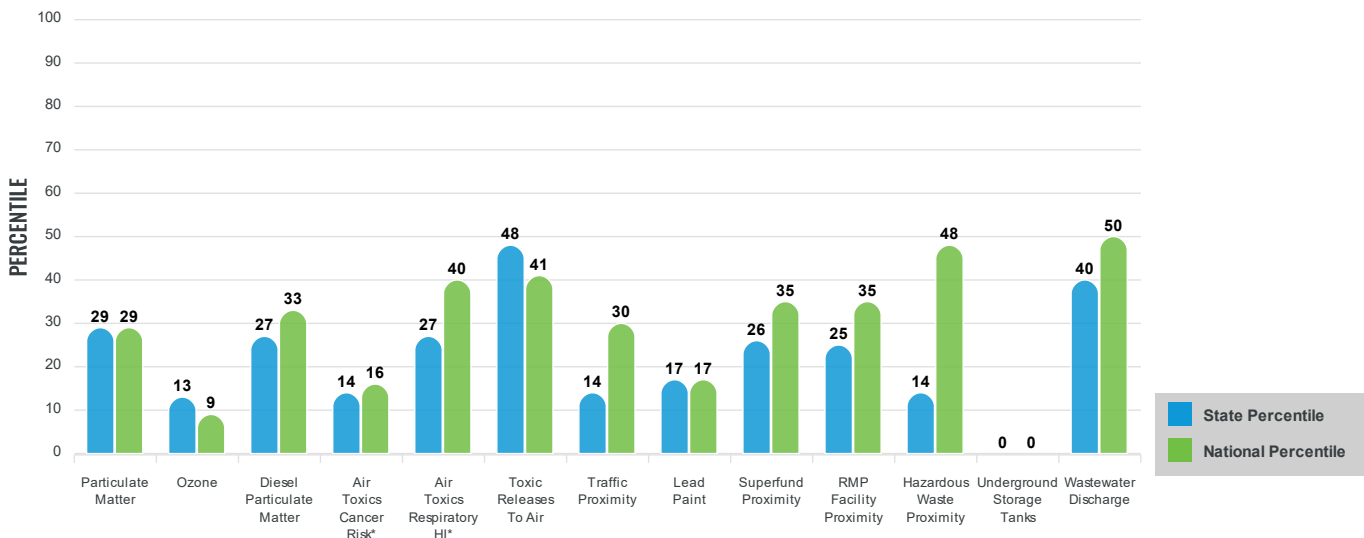
EJ INDEXES FOR THE SELECTED LOCATION



SUPPLEMENTAL INDEXES

The supplemental indexes offer a different perspective on community-level vulnerability. They combine data on percent low-income, percent linguistically isolated, percent less than high school education, percent unemployed, and low life expectancy with a single environmental indicator.

SUPPLEMENTAL INDEXES FOR THE SELECTED LOCATION



These percentiles provide perspective on how the selected block group or buffer area compares to the entire state or nation.

Report for Tract: 06095250106

EJScreen Environmental and Socioeconomic Indicators Data

SELECTED VARIABLES	VALUE	STATE AVERAGE	PERCENTILE IN STATE	USA AVERAGE	PERCENTILE IN USA
POLLUTION AND SOURCES					
Particulate Matter ($\mu\text{g}/\text{m}^3$)	7.72	8.65	35	8.08	37
Ozone (ppb)	55.7	65.9	15	61.6	11
Diesel Particulate Matter ($\mu\text{g}/\text{m}^3$)	0.182	0.26	33	0.261	40
Air Toxics Cancer Risk* (lifetime risk per million)	20	27	3	25	5
Air Toxics Respiratory HI*	0.3	0.34	17	0.31	31
Toxic Releases to Air	740	780	68	4,600	53
Traffic Proximity (daily traffic count/distance to road)	39	510	16	210	35
Lead Paint (% Pre-1960 Housing)	0.012	0.31	17	0.3	16
Superfund Proximity (site count/km distance)	0.052	0.17	32	0.13	44
RMP Facility Proximity (facility count/km distance)	0.14	0.57	30	0.43	42
Hazardous Waste Proximity (facility count/km distance)	1.1	5.9	15	1.9	62
Underground Storage Tanks (count/km ²)	0	1.5	0	3.9	0
Wastewater Discharge (toxicity-weighted concentration/m distance)	0.045	4	60	22	78
SOCIOECONOMIC INDICATORS					
Demographic Index	45%	45%	52	35%	70
Supplemental Demographic Index	8%	15%	21	14%	22
People of Color	76%	61%	63	39%	81
Low Income	14%	28%	30	31%	26
Unemployment Rate	6%	7%	53	6%	62
Limited English Speaking Households	2%	9%	32	5%	61
Less Than High School Education	6%	16%	35	12%	41
Under Age 5	4%	6%	35	6%	37
Over Age 64	20%	16%	74	17%	68
Low Life Expectancy	13%	18%	8	20%	4

*Diesel particulate matter, air toxics cancer risk, and air toxics respiratory hazard index are from the EPA's Air Toxics Data Update, which is the Agency's ongoing, comprehensive evaluation of air toxics in the United States. This effort aims to prioritize air toxics, emission sources, and locations of interest for further study. It is important to remember that the air toxics data presented here provide broad estimates of health risks over geographic areas of the country, not definitive risks to specific individuals or locations. Cancer risks and hazard indices from the Air Toxics Data Update are reported to one significant figure and any additional significant figures here are due to rounding. More information on the Air Toxics Data Update can be found at: <https://www.epa.gov/haps/air-toxics-data-update>.

Sites reporting to EPA within defined area:

Superfund	0
Hazardous Waste, Treatment, Storage, and Disposal Facilities	0
Water Dischargers	1
Air Pollution	0
Brownfields	1
Toxic Release Inventory	1

Other community features within defined area:

Schools	1
Hospitals	0
Places of Worship	0

Other environmental data:

Air Non-attainment	Yes
Impaired Waters	Yes

Selected location contains American Indian Reservation Lands*	No
Selected location contains a "Justice40 (CEJST)" disadvantaged community	No
Selected location contains an EPA IRA disadvantaged community	No

EJScreen Environmental and Socioeconomic Indicators Data

HEALTH INDICATORS

INDICATOR	VALUE	STATE AVERAGE	STATE PERCENTILE	US AVERAGE	US PERCENTILE
Low Life Expectancy	13%	18%	8	20%	4
Heart Disease	3.9	5.2	16	6.1	10
Asthma	8.2	9.5	13	10	8
Cancer	4.6	5.3	40	6.1	19
Persons with Disabilities	9.2%	10.9%	40	13.4%	26

CLIMATE INDICATORS

INDICATOR	VALUE	STATE AVERAGE	STATE PERCENTILE	US AVERAGE	US PERCENTILE
Flood Risk	3%	13%	38	12%	30
Wildfire Risk	91%	30%	77	14%	91

CRITICAL SERVICE GAPS

INDICATOR	VALUE	STATE AVERAGE	STATE PERCENTILE	US AVERAGE	US PERCENTILE
Broadband Internet	2%	10%	20	14%	14
Lack of Health Insurance	3%	7%	26	9%	22
Housing Burden	No	N/A	N/A	N/A	N/A
Transportation Access	Yes	N/A	N/A	N/A	N/A
Food Desert	No	N/A	N/A	N/A	N/A

Report for Tract: 06095250106

EJScreen Community Report

This report provides environmental and socioeconomic information for user-defined areas, and combines that data into environmental justice and supplemental indexes.

American Canyon, CA

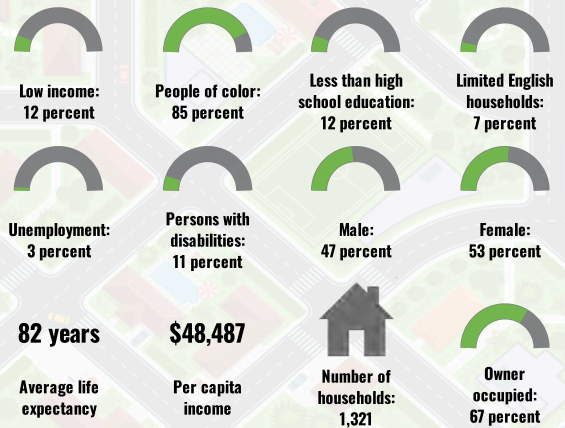
Tract: 06055201003
 Population: 4,846
 Area in square miles: 27.98

Dynamic map initially showing the user-selected area

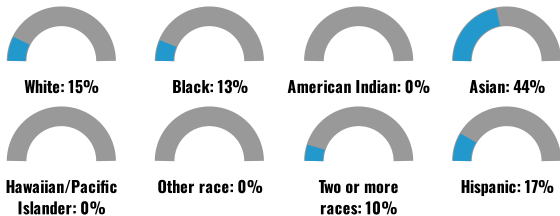
COMMUNITY INFORMATION

LANGUAGES SPOKEN AT HOME

LANGUAGE	PERCENT
English	55%
Spanish	15%
Other Indo-European	5%
Chinese (including Mandarin, Cantonese)	1%
Vietnamese	1%
Tagalog (including Filipino)	22%
Other Asian and Pacific Island	1%
Total Non-English	45%



BREAKDOWN BY RACE



BREAKDOWN BY AGE



LIMITED ENGLISH SPEAKING BREAKDOWN



Notes: Numbers may not sum to totals due to rounding. Hispanic population can be of any race. Source: U.S. Census Bureau, American Community Survey (ACS) 2017-2021. Life expectancy data comes from the Centers for Disease Control.

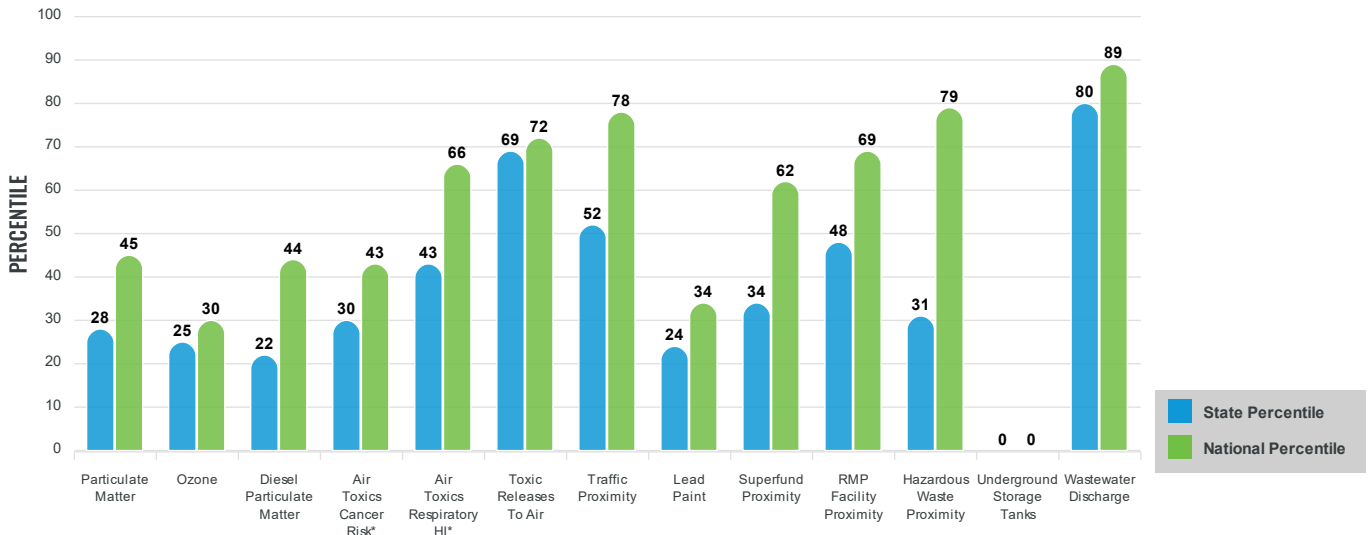
Environmental Justice & Supplemental Indexes

The environmental justice and supplemental indexes are a combination of environmental and socioeconomic information. There are thirteen EJ indexes and supplemental indexes in EJScreen reflecting the 13 environmental indicators. The indexes for a selected area are compared to those for all other locations in the state or nation. For more information and calculation details on the EJ and supplemental indexes, please visit the [EJScreen website](#).

EJ INDEXES

The EJ indexes help users screen for potential EJ concerns. To do this, the EJ index combines data on low income and people of color populations with a single environmental indicator.

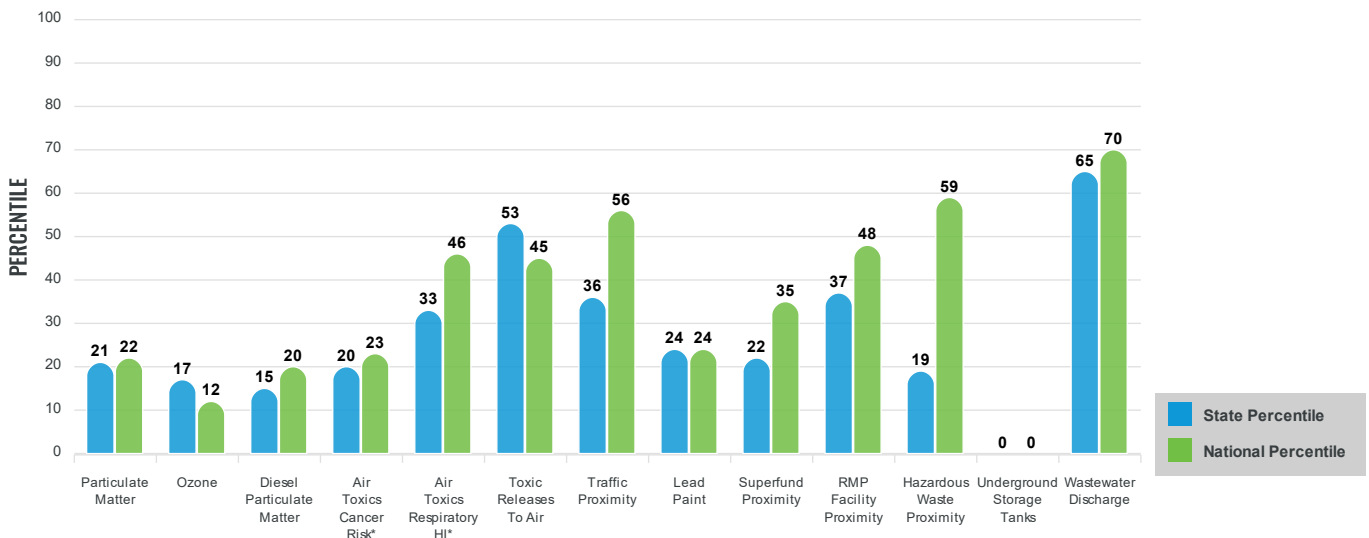
EJ INDEXES FOR THE SELECTED LOCATION



SUPPLEMENTAL INDEXES

The supplemental indexes offer a different perspective on community-level vulnerability. They combine data on percent low-income, percent linguistically isolated, percent less than high school education, percent unemployed, and low life expectancy with a single environmental indicator.

SUPPLEMENTAL INDEXES FOR THE SELECTED LOCATION



These percentiles provide perspective on how the selected block group or buffer area compares to the entire state or nation.

Report for Tract: 06055201003

EJScreen Environmental and Socioeconomic Indicators Data

SELECTED VARIABLES	VALUE	STATE AVERAGE	PERCENTILE IN STATE	USA AVERAGE	PERCENTILE IN USA
POLLUTION AND SOURCES					
Particulate Matter ($\mu\text{g}/\text{m}^3$)	7.05	8.65	19	8.08	21
Ozone (ppb)	55.9	65.9	16	61.6	12
Diesel Particulate Matter ($\mu\text{g}/\text{m}^3$)	0.112	0.26	14	0.261	20
Air Toxics Cancer Risk* (lifetime risk per million)	20	27	3	25	5
Air Toxics Respiratory HI*	0.3	0.34	17	0.31	31
Toxic Releases to Air	540	780	62	4,600	48
Traffic Proximity (daily traffic count/distance to road)	150	510	42	210	68
Lead Paint (% Pre-1960 Housing)	0.074	0.31	32	0.3	31
Superfund Proximity (site count/km distance)	0.039	0.17	23	0.13	35
RMP Facility Proximity (facility count/km distance)	0.17	0.57	39	0.43	49
Hazardous Waste Proximity (facility count/km distance)	1.6	5.9	21	1.9	69
Underground Storage Tanks (count/km ²)	0	1.5	0	3.9	0
Wastewater Discharge (toxicity-weighted concentration/m distance)	0.7	4	82	22	90
SOCIOECONOMIC INDICATORS					
Demographic Index	49%	45%	57	35%	73
Supplemental Demographic Index	10%	15%	34	14%	35
People of Color	85%	61%	74	39%	86
Low Income	12%	28%	25	31%	21
Unemployment Rate	3%	7%	32	6%	42
Limited English Speaking Households	7%	9%	60	5%	81
Less Than High School Education	12%	16%	54	12%	65
Under Age 5	5%	6%	46	6%	48
Over Age 64	13%	16%	49	17%	41
Low Life Expectancy	15%	18%	26	20%	14

*Diesel particulate matter, air toxics cancer risk, and air toxics respiratory hazard index are from the EPA's Air Toxics Data Update, which is the Agency's ongoing, comprehensive evaluation of air toxics in the United States. This effort aims to prioritize air toxics, emission sources, and locations of interest for further study. It is important to remember that the air toxics data presented here provide broad estimates of health risks over geographic areas of the country, not definitive risks to specific individuals or locations. Cancer risks and hazard indices from the Air Toxics Data Update are reported to one significant figure and any additional significant figures here are due to rounding. More information on the Air Toxics Data Update can be found at: <https://www.epa.gov/haps/air-toxics-data-update>.

Sites reporting to EPA within defined area:

Superfund	0
Hazardous Waste, Treatment, Storage, and Disposal Facilities	1
Water Dischargers	11
Air Pollution	1
Brownfields	0
Toxic Release Inventory	0

Other community features within defined area:

Schools	2
Hospitals	0
Places of Worship	0

Other environmental data:

Air Non-attainment	Yes
Impaired Waters	No

Selected location contains American Indian Reservation Lands*	No
Selected location contains a "Justice40 (CEJST)" disadvantaged community	No
Selected location contains an EPA IRA disadvantaged community	No

EJScreen Environmental and Socioeconomic Indicators Data

HEALTH INDICATORS

INDICATOR	VALUE	STATE AVERAGE	STATE PERCENTILE	US AVERAGE	US PERCENTILE
Low Life Expectancy	15%	18%	26	20%	14
Heart Disease	3.7	5.2	12	6.1	8
Asthma	8.3	9.5	14	10	10
Cancer	4.1	5.3	27	6.1	12
Persons with Disabilities	10.8%	10.9%	56	13.4%	38

CLIMATE INDICATORS

INDICATOR	VALUE	STATE AVERAGE	STATE PERCENTILE	US AVERAGE	US PERCENTILE
Flood Risk	6%	13%	52	12%	49
Wildfire Risk	91%	30%	76	14%	91

CRITICAL SERVICE GAPS

INDICATOR	VALUE	STATE AVERAGE	STATE PERCENTILE	US AVERAGE	US PERCENTILE
Broadband Internet	9%	10%	55	14%	41
Lack of Health Insurance	4%	7%	29	9%	24
Housing Burden	Yes	N/A	N/A	N/A	N/A
Transportation Access	Yes	N/A	N/A	N/A	N/A
Food Desert	No	N/A	N/A	N/A	N/A

Report for Tract: 06055201003

EJScreen Community Report

This report provides environmental and socioeconomic information for user-defined areas, and combines that data into environmental justice and supplemental indexes.

Fairfield, CA

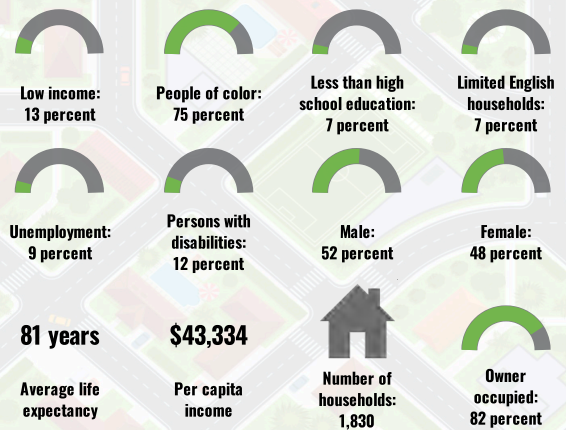
Tract: 06095252206
 Population: 5,992
 Area in square miles: 7.13

Dynamic map initially showing the user-selected area

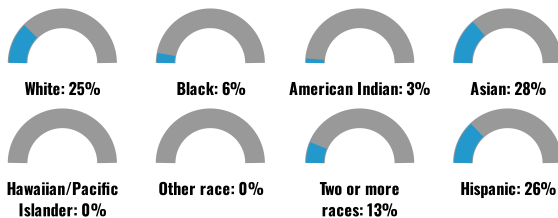
COMMUNITY INFORMATION

LANGUAGES SPOKEN AT HOME

LANGUAGE	PERCENT
English	71%
Spanish	10%
French, Haitian, or Cajun	1%
Other Indo-European	6%
Korean	1%
Chinese (including Mandarin, Cantonese)	3%
Tagalog (including Filipino)	8%
Other Asian and Pacific Island	1%
Total Non-English	29%



BREAKDOWN BY RACE



BREAKDOWN BY AGE



LIMITED ENGLISH SPEAKING BREAKDOWN



Notes: Numbers may not sum to totals due to rounding. Hispanic population can be of any race. Source: U.S. Census Bureau, American Community Survey (ACS) 2017-2021. Life expectancy data comes from the Centers for Disease Control.

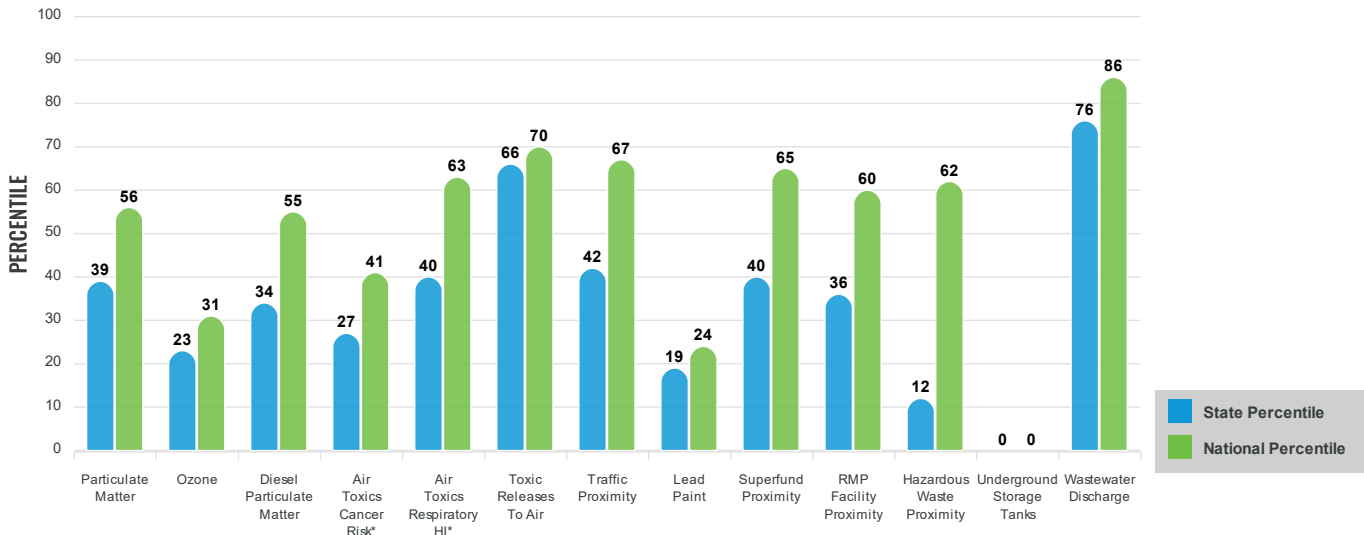
Environmental Justice & Supplemental Indexes

The environmental justice and supplemental indexes are a combination of environmental and socioeconomic information. There are thirteen EJ indexes and supplemental indexes in EJScreen reflecting the 13 environmental indicators. The indexes for a selected area are compared to those for all other locations in the state or nation. For more information and calculation details on the EJ and supplemental indexes, please visit the [EJScreen website](#).

EJ INDEXES

The EJ indexes help users screen for potential EJ concerns. To do this, the EJ index combines data on low income and people of color populations with a single environmental indicator.

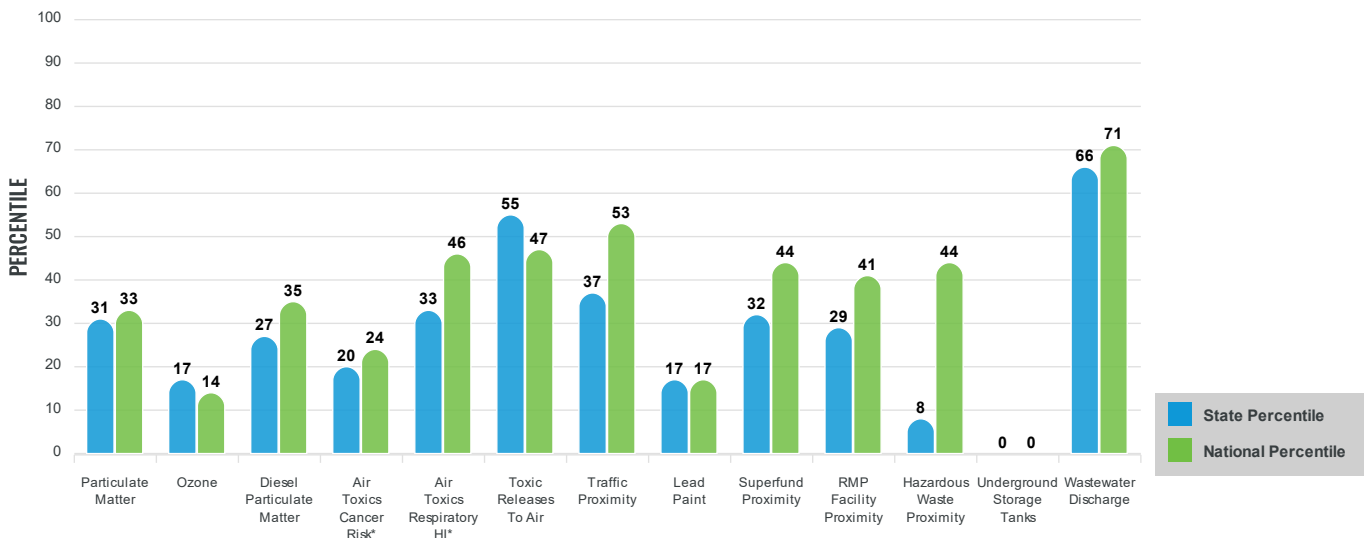
EJ INDEXES FOR THE SELECTED LOCATION



SUPPLEMENTAL INDEXES

The supplemental indexes offer a different perspective on community-level vulnerability. They combine data on percent low-income, percent linguistically isolated, percent less than high school education, percent unemployed, and low life expectancy with a single environmental indicator.

SUPPLEMENTAL INDEXES FOR THE SELECTED LOCATION



These percentiles provide perspective on how the selected block group or buffer area compares to the entire state or nation.

Report for Tract: 06095252206

EJScreen Environmental and Socioeconomic Indicators Data

SELECTED VARIABLES	VALUE	STATE AVERAGE	PERCENTILE IN STATE	USA AVERAGE	PERCENTILE IN USA
POLLUTION AND SOURCES					
Particulate Matter ($\mu\text{g}/\text{m}^3$)	7.53	8.65	30	8.08	33
Ozone (ppb)	56.2	65.9	16	61.6	14
Diesel Particulate Matter ($\mu\text{g}/\text{m}^3$)	0.158	0.26	26	0.261	33
Air Toxics Cancer Risk* (lifetime risk per million)	20	27	3	25	5
Air Toxics Respiratory HI*	0.3	0.34	17	0.31	31
Toxic Releases to Air	600	780	64	4,600	49
Traffic Proximity (daily traffic count/distance to road)	180	510	47	210	71
Lead Paint (% Pre-1960 Housing)	0.018	0.31	19	0.3	18
Superfund Proximity (site count/km distance)	0.051	0.17	31	0.13	44
RMP Facility Proximity (facility count/km distance)	0.13	0.57	28	0.43	40
Hazardous Waste Proximity (facility count/km distance)	0.31	5.9	7	1.9	43
Underground Storage Tanks (count/km ²)	0	1.5	0	3.9	0
Wastewater Discharge (toxicity-weighted concentration/m distance)	2.8	4	90	22	94
SOCIOECONOMIC INDICATORS					
Demographic Index	44%	45%	50	35%	68
Supplemental Demographic Index	10%	15%	35	14%	37
People of Color	75%	61%	61	39%	80
Low Income	13%	28%	28	31%	24
Unemployment Rate	9%	7%	72	6%	77
Limited English Speaking Households	7%	9%	60	5%	81
Less Than High School Education	7%	16%	38	12%	45
Under Age 5	7%	6%	69	6%	70
Over Age 64	15%	16%	55	17%	46
Low Life Expectancy	17%	18%	39	20%	23

*Diesel particulate matter, air toxics cancer risk, and air toxics respiratory hazard index are from the EPA's Air Toxics Data Update, which is the Agency's ongoing, comprehensive evaluation of air toxics in the United States. This effort aims to prioritize air toxics, emission sources, and locations of interest for further study. It is important to remember that the air toxics data presented here provide broad estimates of health risks over geographic areas of the country, not definitive risks to specific individuals or locations. Cancer risks and hazard indices from the Air Toxics Data Update are reported to one significant figure and any additional significant figures here are due to rounding. More information on the Air Toxics Data Update can be found at: <https://www.epa.gov/haps/air-toxics-data-update>.

Sites reporting to EPA within defined area:

Superfund	0
Hazardous Waste, Treatment, Storage, and Disposal Facilities	0
Water Dischargers	3
Air Pollution	0
Brownfields	0
Toxic Release Inventory	2

Other community features within defined area:

Schools	2
Hospitals	0
Places of Worship	0

Other environmental data:

Air Non-attainment	Yes
Impaired Waters	No

Selected location contains American Indian Reservation Lands*	No
Selected location contains a "Justice40 (CEJST)" disadvantaged community	No
Selected location contains an EPA IRA disadvantaged community	No

EJScreen Environmental and Socioeconomic Indicators Data

HEALTH INDICATORS

INDICATOR	VALUE	STATE AVERAGE	STATE PERCENTILE	US AVERAGE	US PERCENTILE
Low Life Expectancy	17%	18%	39	20%	23
Heart Disease	3.6	5.2	11	6.1	7
Asthma	9.1	9.5	37	10	27
Cancer	4.3	5.3	32	6.1	15
Persons with Disabilities	10.8%	10.9%	56	13.4%	37

CLIMATE INDICATORS

INDICATOR	VALUE	STATE AVERAGE	STATE PERCENTILE	US AVERAGE	US PERCENTILE
Flood Risk	9%	13%	60	12%	61
Wildfire Risk	91%	30%	77	14%	91

CRITICAL SERVICE GAPS

INDICATOR	VALUE	STATE AVERAGE	STATE PERCENTILE	US AVERAGE	US PERCENTILE
Broadband Internet	1%	10%	0	14%	12
Lack of Health Insurance	6%	7%	49	9%	42
Housing Burden	No	N/A	N/A	N/A	N/A
Transportation Access	Yes	N/A	N/A	N/A	N/A
Food Desert	No	N/A	N/A	N/A	N/A

Report for Tract: 06095252206

EJScreen Community Report

This report provides environmental and socioeconomic information for user-defined areas, and combines that data into environmental justice and supplemental indexes.

Solano County, CA

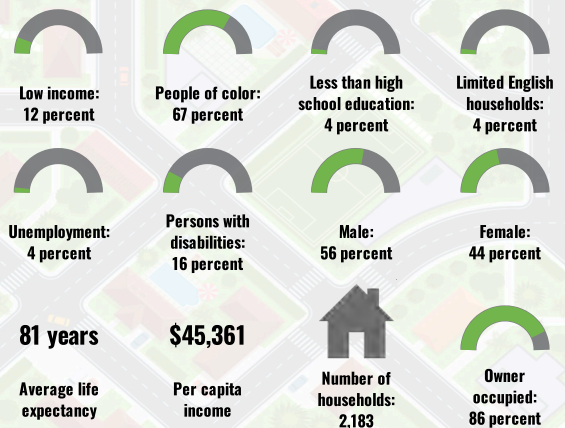
Tract: 06095252205
 Population: 7,807
 Area in square miles: 13.82

Dynamic map initially showing the user-selected area

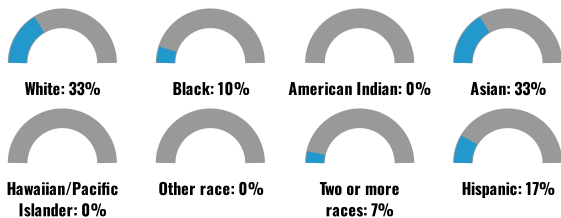
COMMUNITY INFORMATION

LANGUAGES SPOKEN AT HOME

LANGUAGE	PERCENT
English	64%
Spanish	10%
French, Haitian, or Cajun	1%
Other Indo-European	5%
Chinese (including Mandarin, Cantonese)	5%
Tagalog (including Filipino)	12%
Other Asian and Pacific Island	3%
Total Non-English	36%



BREAKDOWN BY RACE



BREAKDOWN BY AGE



LIMITED ENGLISH SPEAKING BREAKDOWN



Notes: Numbers may not sum to totals due to rounding. Hispanic population can be of any race. Source: U.S. Census Bureau, American Community Survey (ACS) 2017-2021. Life expectancy data comes from the Centers for Disease Control.

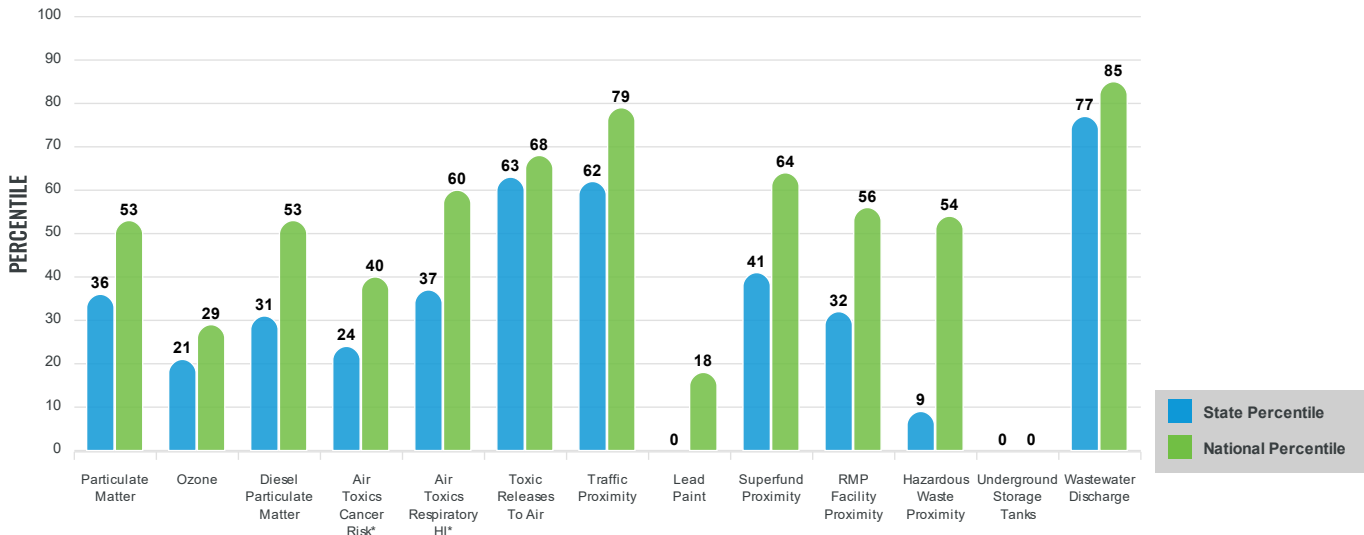
Environmental Justice & Supplemental Indexes

The environmental justice and supplemental indexes are a combination of environmental and socioeconomic information. There are thirteen EJ indexes and supplemental indexes in EJScreen reflecting the 13 environmental indicators. The indexes for a selected area are compared to those for all other locations in the state or nation. For more information and calculation details on the EJ and supplemental indexes, please visit the [EJScreen website](#).

EJ INDEXES

The EJ indexes help users screen for potential EJ concerns. To do this, the EJ index combines data on low income and people of color populations with a single environmental indicator.

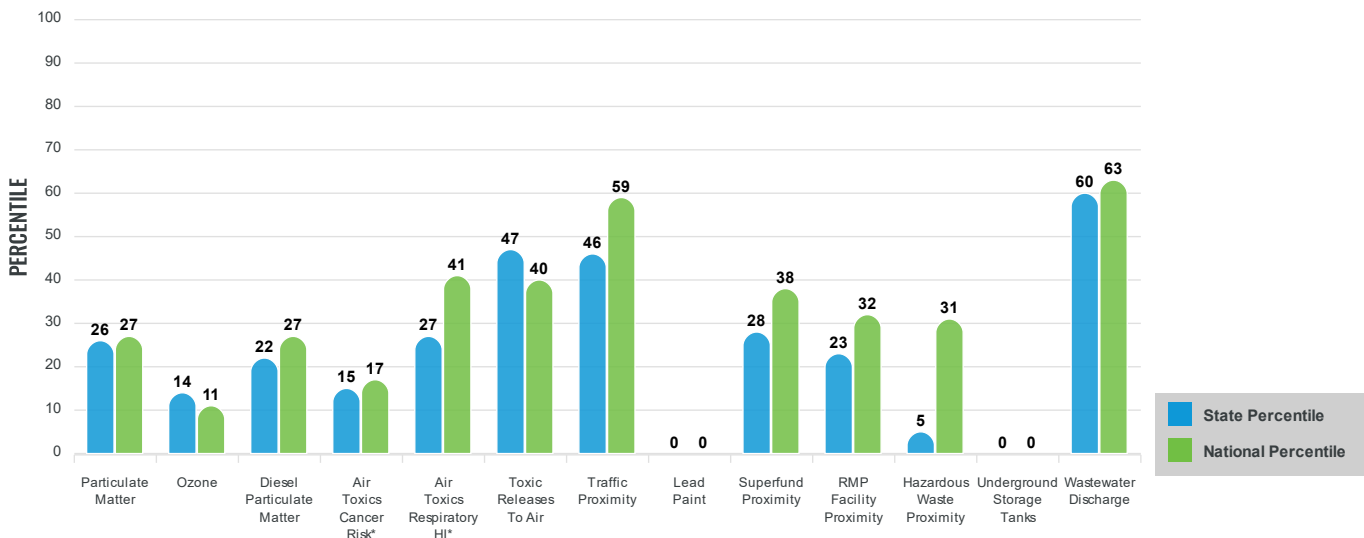
EJ INDEXES FOR THE SELECTED LOCATION



SUPPLEMENTAL INDEXES

The supplemental indexes offer a different perspective on community-level vulnerability. They combine data on percent low-income, percent linguistically isolated, percent less than high school education, percent unemployed, and low life expectancy with a single environmental indicator.

SUPPLEMENTAL INDEXES FOR THE SELECTED LOCATION



These percentiles provide perspective on how the selected block group or buffer area compares to the entire state or nation.

Report for Tract: 06095252205

EJScreen Environmental and Socioeconomic Indicators Data

SELECTED VARIABLES	VALUE	STATE AVERAGE	PERCENTILE IN STATE	USA AVERAGE	PERCENTILE IN USA
POLLUTION AND SOURCES					
Particulate Matter ($\mu\text{g}/\text{m}^3$)	7.53	8.65	30	8.08	33
Ozone (ppb)	56.2	65.9	16	61.6	14
Diesel Particulate Matter ($\mu\text{g}/\text{m}^3$)	0.158	0.26	26	0.261	33
Air Toxics Cancer Risk* (lifetime risk per million)	20	27	3	25	5
Air Toxics Respiratory HI*	0.3	0.34	17	0.31	31
Toxic Releases to Air	650	780	66	4,600	51
Traffic Proximity (daily traffic count/distance to road)	370	510	68	210	86
Lead Paint (% Pre-1960 Housing)	0.0067	0.31	0	0.3	0
Superfund Proximity (site count/km distance)	0.056	0.17	35	0.13	47
RMP Facility Proximity (facility count/km distance)	0.12	0.57	26	0.43	38
Hazardous Waste Proximity (facility count/km distance)	0.22	5.9	6	1.9	37
Underground Storage Tanks (count/km ²)	0	1.5	0	3.9	0
Wastewater Discharge (toxicity-weighted concentration/m distance)	2.9	4	90	22	94
SOCIOECONOMIC INDICATORS					
Demographic Index	40%	45%	43	35%	64
Supplemental Demographic Index	8%	15%	22	14%	23
People of Color	67%	61%	54	39%	76
Low Income	12%	28%	26	31%	22
Unemployment Rate	4%	7%	37	6%	48
Limited English Speaking Households	4%	9%	45	5%	72
Less Than High School Education	4%	16%	26	12%	30
Under Age 5	8%	6%	77	6%	77
Over Age 64	14%	16%	53	17%	44
Low Life Expectancy	17%	18%	39	20%	23

*Diesel particulate matter, air toxics cancer risk, and air toxics respiratory hazard index are from the EPA's Air Toxics Data Update, which is the Agency's ongoing, comprehensive evaluation of air toxics in the United States. This effort aims to prioritize air toxics, emission sources, and locations of interest for further study. It is important to remember that the air toxics data presented here provide broad estimates of health risks over geographic areas of the country, not definitive risks to specific individuals or locations. Cancer risks and hazard indices from the Air Toxics Data Update are reported to one significant figure and any additional significant figures here are due to rounding. More information on the Air Toxics Data Update can be found at: <https://www.epa.gov/haps/air-toxics-data-update>.

Sites reporting to EPA within defined area:

Superfund	0
Hazardous Waste, Treatment, Storage, and Disposal Facilities	0
Water Dischargers	1
Air Pollution	0
Brownfields	0
Toxic Release Inventory	0

Other community features within defined area:

Schools	2
Hospitals	0
Places of Worship	0

Other environmental data:

Air Non-attainment	Yes
Impaired Waters	Yes

Selected location contains American Indian Reservation Lands*	No
Selected location contains a "Justice40 (CEJST)" disadvantaged community	No
Selected location contains an EPA IRA disadvantaged community	No

EJScreen Environmental and Socioeconomic Indicators Data

HEALTH INDICATORS

INDICATOR	VALUE	STATE AVERAGE	STATE PERCENTILE	US AVERAGE	US PERCENTILE
Low Life Expectancy	17%	18%	39	20%	23
Heart Disease	3.6	5.2	11	6.1	7
Asthma	9.1	9.5	37	10	27
Cancer	4.3	5.3	32	6.1	15
Persons with Disabilities	14.9%	10.9%	83	13.4%	65

CLIMATE INDICATORS

INDICATOR	VALUE	STATE AVERAGE	STATE PERCENTILE	US AVERAGE	US PERCENTILE
Flood Risk	11%	13%	66	12%	69
Wildfire Risk	83%	30%	74	14%	89

CRITICAL SERVICE GAPS

INDICATOR	VALUE	STATE AVERAGE	STATE PERCENTILE	US AVERAGE	US PERCENTILE
Broadband Internet	1%	10%	18	14%	13
Lack of Health Insurance	1%	7%	7	9%	5
Housing Burden	No	N/A	N/A	N/A	N/A
Transportation Access	Yes	N/A	N/A	N/A	N/A
Food Desert	No	N/A	N/A	N/A	N/A

Report for Tract: 06095252205

EJScreen Community Report

This report provides environmental and socioeconomic information for user-defined areas, and combines that data into environmental justice and supplemental indexes.

Solano County, CA

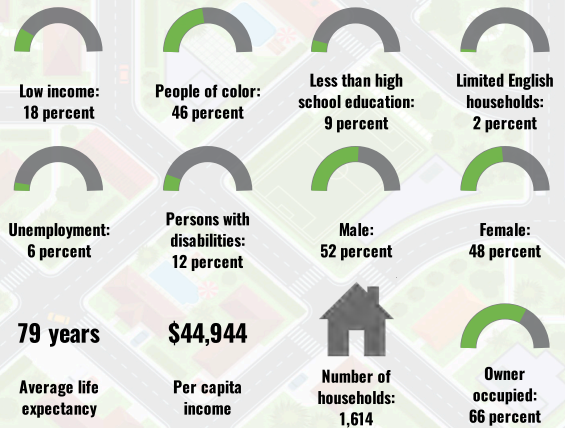
Tract: 06095252102
 Population: 4,274
 Area in square miles: 30.26

Dynamic map initially showing the user-selected area

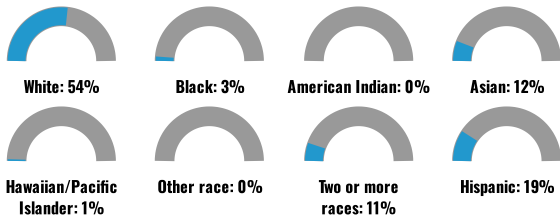
LANGUAGES SPOKEN AT HOME

LANGUAGE	PERCENT
English	84%
Spanish	9%
Other Indo-European	2%
Tagalog (including Filipino)	4%
Other Asian and Pacific Island	1%
Total Non-English	16%

COMMUNITY INFORMATION



BREAKDOWN BY RACE



BREAKDOWN BY AGE



LIMITED ENGLISH SPEAKING BREAKDOWN



Notes: Numbers may not sum to totals due to rounding. Hispanic population can be of any race. Source: U.S. Census Bureau, American Community Survey (ACS) 2017-2021. Life expectancy data comes from the Centers for Disease Control.

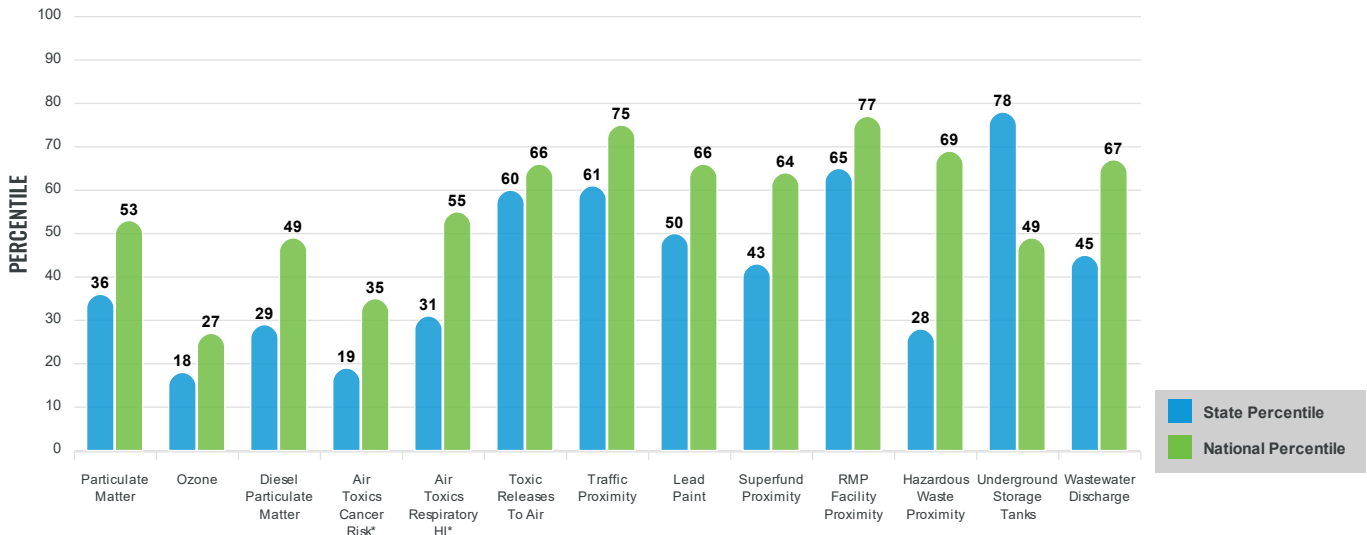
Environmental Justice & Supplemental Indexes

The environmental justice and supplemental indexes are a combination of environmental and socioeconomic information. There are thirteen EJ indexes and supplemental indexes in EJScreen reflecting the 13 environmental indicators. The indexes for a selected area are compared to those for all other locations in the state or nation. For more information and calculation details on the EJ and supplemental indexes, please visit the [EJScreen website](#).

EJ INDEXES

The EJ indexes help users screen for potential EJ concerns. To do this, the EJ index combines data on low income and people of color populations with a single environmental indicator.

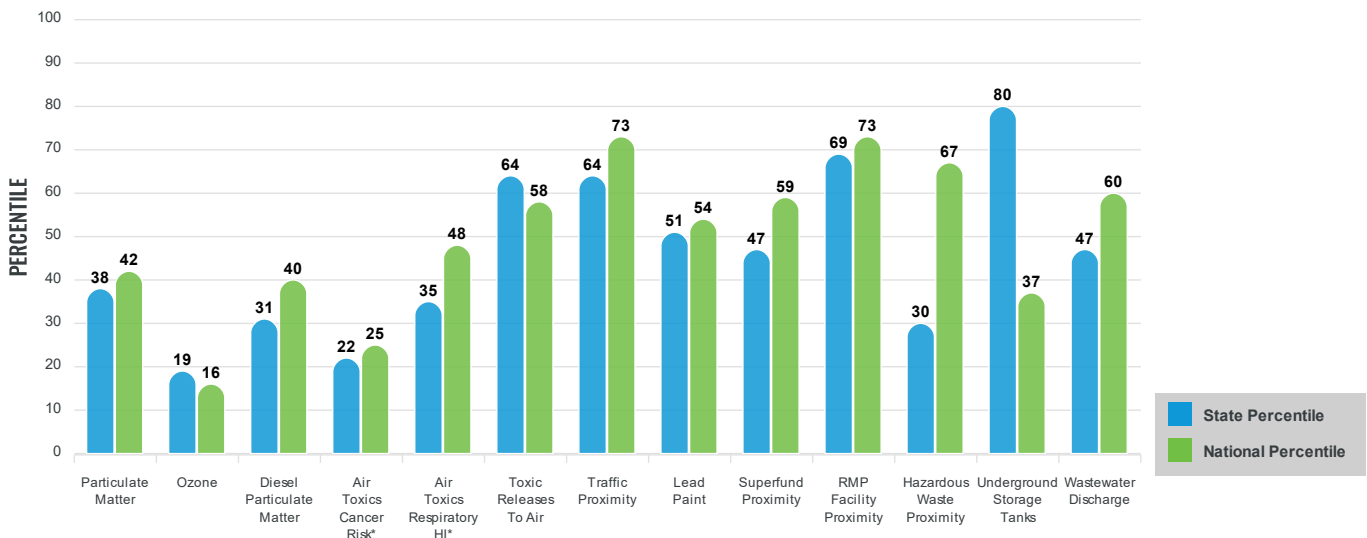
EJ INDEXES FOR THE SELECTED LOCATION



SUPPLEMENTAL INDEXES

The supplemental indexes offer a different perspective on community-level vulnerability. They combine data on percent low-income, percent linguistically isolated, percent less than high school education, percent unemployed, and low life expectancy with a single environmental indicator.

SUPPLEMENTAL INDEXES FOR THE SELECTED LOCATION



These percentiles provide perspective on how the selected block group or buffer area compares to the entire state or nation.

Report for Tract: 06095252102

EJScreen Environmental and Socioeconomic Indicators Data

SELECTED VARIABLES	VALUE	STATE AVERAGE	PERCENTILE IN STATE	USA AVERAGE	PERCENTILE IN USA
POLLUTION AND SOURCES					
Particulate Matter ($\mu\text{g}/\text{m}^3$)	7.84	8.65	37	8.08	41
Ozone (ppb)	56.7	65.9	17	61.6	16
Diesel Particulate Matter ($\mu\text{g}/\text{m}^3$)	0.167	0.26	29	0.261	36
Air Toxics Cancer Risk* (lifetime risk per million)	20	27	3	25	5
Air Toxics Respiratory HI*	0.3	0.34	17	0.31	31
Toxic Releases to Air	1,200	780	79	4,600	63
Traffic Proximity (daily traffic count/distance to road)	620	510	79	210	92
Lead Paint (% Pre-1960 Housing)	0.34	0.31	59	0.3	61
Superfund Proximity (site count/km distance)	0.079	0.17	48	0.13	58
RMP Facility Proximity (facility count/km distance)	1.8	0.57	93	0.43	95
Hazardous Waste Proximity (facility count/km distance)	2.4	5.9	29	1.9	76
Underground Storage Tanks (count/km ²)	0.28	1.5	74	3.9	34
Wastewater Discharge (toxicity-weighted concentration/m distance)	0.0065	4	48	22	64
SOCIOECONOMIC INDICATORS					
Demographic Index	32%	45%	31	35%	54
Supplemental Demographic Index	11%	15%	38	14%	40
People of Color	46%	61%	32	39%	63
Low Income	18%	28%	39	31%	34
Unemployment Rate	6%	7%	55	6%	64
Limited English Speaking Households	2%	9%	33	5%	62
Less Than High School Education	9%	16%	45	12%	54
Under Age 5	14%	6%	95	6%	94
Over Age 64	16%	16%	61	17%	52
Low Life Expectancy	19%	18%	69	20%	49

*Diesel particulate matter, air toxics cancer risk, and air toxics respiratory hazard index are from the EPA's Air Toxics Data Update, which is the Agency's ongoing, comprehensive evaluation of air toxics in the United States. This effort aims to prioritize air toxics, emission sources, and locations of interest for further study. It is important to remember that the air toxics data presented here provide broad estimates of health risks over geographic areas of the country, not definitive risks to specific individuals or locations. Cancer risks and hazard indices from the Air Toxics Data Update are reported to one significant figure and any additional significant figures here are due to rounding. More information on the Air Toxics Data Update can be found at: <https://www.epa.gov/haps/air-toxics-data-update>.

Sites reporting to EPA within defined area:

Superfund	0
Hazardous Waste, Treatment, Storage, and Disposal Facilities	5
Water Dischargers	44
Air Pollution	5
Brownfields	0
Toxic Release Inventory	7

Other community features within defined area:

Schools	1
Hospitals	0
Places of Worship	2

Other environmental data:

Air Non-attainment	Yes
Impaired Waters	Yes

Selected location contains American Indian Reservation Lands*	No
Selected location contains a "Justice40 (CEJST)" disadvantaged community	No
Selected location contains an EPA IRA disadvantaged community	No

EJScreen Environmental and Socioeconomic Indicators Data

HEALTH INDICATORS

INDICATOR	VALUE	STATE AVERAGE	STATE PERCENTILE	US AVERAGE	US PERCENTILE
Low Life Expectancy	19%	18%	69	20%	49
Heart Disease	5.1	5.2	52	6.1	31
Asthma	10	9.5	65	10	55
Cancer	6	5.3	69	6.1	45
Persons with Disabilities	10.8%	10.9%	56	13.4%	37

CLIMATE INDICATORS

INDICATOR	VALUE	STATE AVERAGE	STATE PERCENTILE	US AVERAGE	US PERCENTILE
Flood Risk	11%	13%	66	12%	69
Wildfire Risk	2%	30%	62	14%	79

CRITICAL SERVICE GAPS

INDICATOR	VALUE	STATE AVERAGE	STATE PERCENTILE	US AVERAGE	US PERCENTILE
Broadband Internet	5%	10%	40	14%	28
Lack of Health Insurance	1%	7%	9	9%	7
Housing Burden	No	N/A	N/A	N/A	N/A
Transportation Access	Yes	N/A	N/A	N/A	N/A
Food Desert	No	N/A	N/A	N/A	N/A

Report for Tract: 06095252102

EJScreen Community Report

This report provides environmental and socioeconomic information for user-defined areas, and combines that data into environmental justice and supplemental indexes.

Benicia, CA

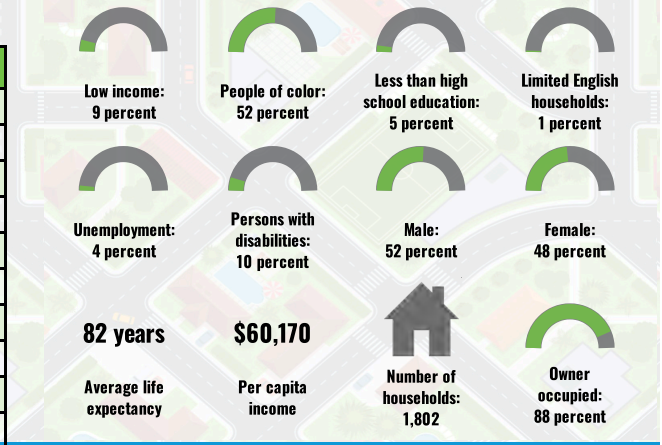
Tract: 06095252104
 Population: 5,716
 Area in square miles: 3.94

Dynamic map initially showing the user-selected area

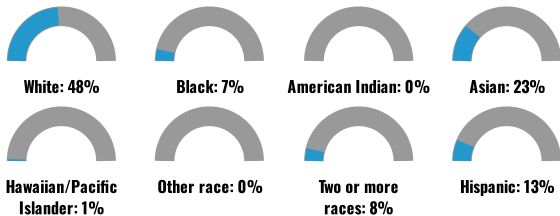
COMMUNITY INFORMATION

LANGUAGES SPOKEN AT HOME

LANGUAGE	PERCENT
English	77%
Spanish	7%
Russian, Polish, or Other Slavic	1%
Other Indo-European	1%
Chinese (including Mandarin, Cantonese)	4%
Vietnamese	1%
Tagalog (including Filipino)	6%
Other Asian and Pacific Island	2%
Arabic	1%
Total Non-English	23%



BREAKDOWN BY RACE



BREAKDOWN BY AGE



LIMITED ENGLISH SPEAKING BREAKDOWN



Notes: Numbers may not sum to totals due to rounding. Hispanic population can be of any race. Source: U.S. Census Bureau, American Community Survey (ACS) 2017-2021. Life expectancy data comes from the Centers for Disease Control.

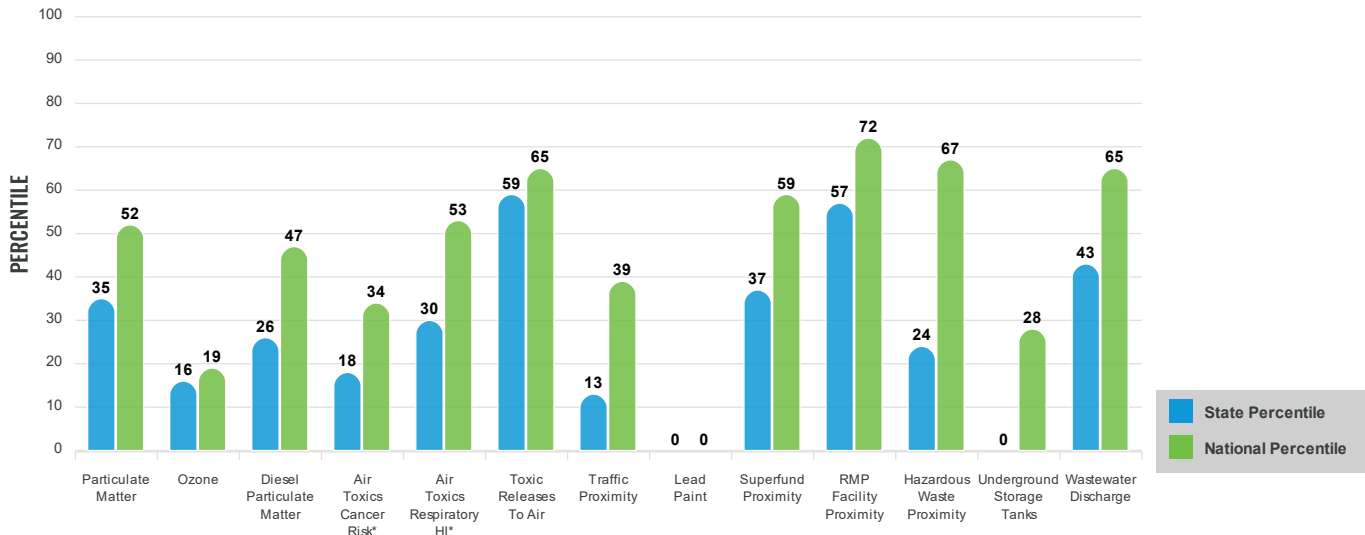
Environmental Justice & Supplemental Indexes

The environmental justice and supplemental indexes are a combination of environmental and socioeconomic information. There are thirteen EJ indexes and supplemental indexes in EJScreen reflecting the 13 environmental indicators. The indexes for a selected area are compared to those for all other locations in the state or nation. For more information and calculation details on the EJ and supplemental indexes, please visit the [EJScreen website](#).

EJ INDEXES

The EJ indexes help users screen for potential EJ concerns. To do this, the EJ index combines data on low income and people of color populations with a single environmental indicator.

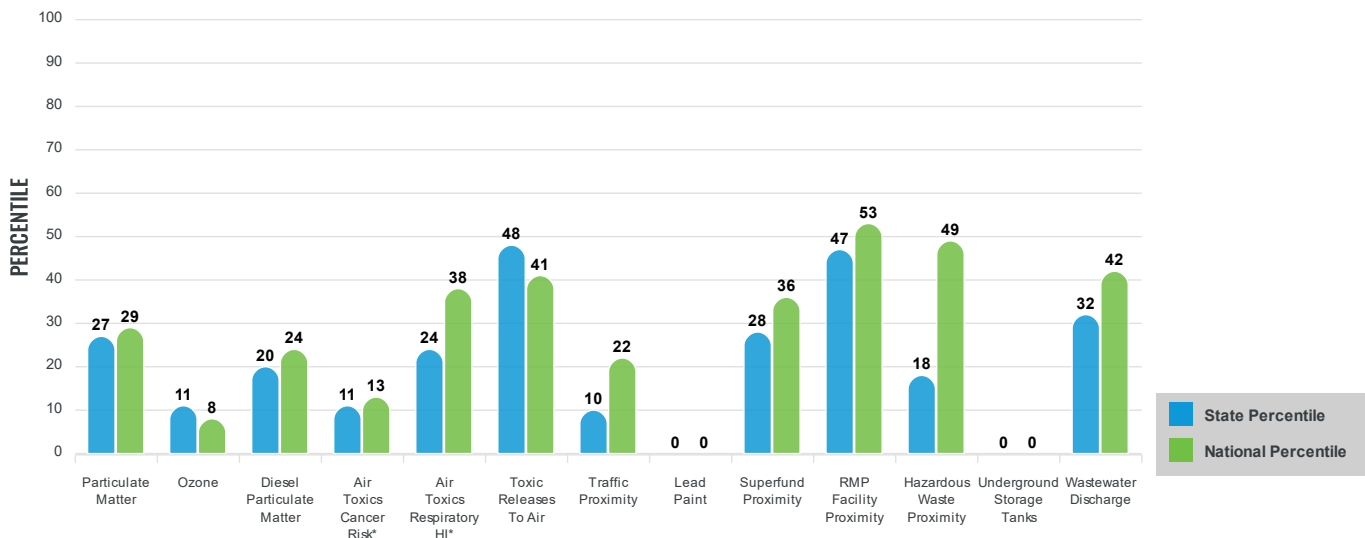
EJ INDEXES FOR THE SELECTED LOCATION



SUPPLEMENTAL INDEXES

The supplemental indexes offer a different perspective on community-level vulnerability. They combine data on percent low-income, percent linguistically isolated, percent less than high school education, percent unemployed, and low life expectancy with a single environmental indicator.

SUPPLEMENTAL INDEXES FOR THE SELECTED LOCATION



These percentiles provide perspective on how the selected block group or buffer area compares to the entire state or nation.

Report for Tract: 06095252104

EJScreen Environmental and Socioeconomic Indicators Data

SELECTED VARIABLES	VALUE	STATE AVERAGE	PERCENTILE IN STATE	USA AVERAGE	PERCENTILE IN USA
POLLUTION AND SOURCES					
Particulate Matter ($\mu\text{g}/\text{m}^3$)	7.9	8.65	38	8.08	42
Ozone (ppb)	55.7	65.9	15	61.6	11
Diesel Particulate Matter ($\mu\text{g}/\text{m}^3$)	0.162	0.26	27	0.261	35
Air Toxics Cancer Risk* (lifetime risk per million)	20	27	3	25	5
Air Toxics Respiratory HI*	0.3	0.34	17	0.31	31
Toxic Releases to Air	1,300	780	80	4,600	64
Traffic Proximity (daily traffic count/distance to road)	32	510	13	210	31
Lead Paint (% Pre-1960 Housing)	0.0033	0.31	0	0.3	0
Superfund Proximity (site count/km distance)	0.065	0.17	40	0.13	52
RMP Facility Proximity (facility count/km distance)	1	0.57	84	0.43	88
Hazardous Waste Proximity (facility count/km distance)	2	5.9	26	1.9	74
Underground Storage Tanks (count/km ²)	0.24	1.5	74	3.9	33
Wastewater Discharge (toxicity-weighted concentration/m distance)	0.0069	4	49	22	64
SOCIOECONOMIC INDICATORS					
Demographic Index	31%	45%	29	35%	52
Supplemental Demographic Index	7%	15%	15	14%	16
People of Color	52%	61%	38	39%	67
Low Income	9%	28%	18	31%	15
Unemployment Rate	4%	7%	36	6%	47
Limited English Speaking Households	1%	9%	31	5%	61
Less Than High School Education	5%	16%	32	12%	37
Under Age 5	7%	6%	66	6%	67
Over Age 64	14%	16%	53	17%	44
Low Life Expectancy	16%	18%	29	20%	16

*Diesel particulate matter, air toxics cancer risk, and air toxics respiratory hazard index are from the EPA's Air Toxics Data Update, which is the Agency's ongoing, comprehensive evaluation of air toxics in the United States. This effort aims to prioritize air toxics, emission sources, and locations of interest for further study. It is important to remember that the air toxics data presented here provide broad estimates of health risks over geographic areas of the country, not definitive risks to specific individuals or locations. Cancer risks and hazard indices from the Air Toxics Data Update are reported to one significant figure and any additional significant figures here are due to rounding. More information on the Air Toxics Data Update can be found at: <https://www.epa.gov/haps/air-toxics-data-update>.

Sites reporting to EPA within defined area:

Superfund	0
Hazardous Waste, Treatment, Storage, and Disposal Facilities	0
Water Dischargers	4
Air Pollution	0
Brownfields	0
Toxic Release Inventory	2

Other community features within defined area:

Schools	1
Hospitals	0
Places of Worship	0

Other environmental data:

Air Non-attainment	Yes
Impaired Waters	Yes

Selected location contains American Indian Reservation Lands*	No
Selected location contains a "Justice40 (CEJST)" disadvantaged community	No
Selected location contains an EPA IRA disadvantaged community	No

EJScreen Environmental and Socioeconomic Indicators Data

HEALTH INDICATORS

INDICATOR	VALUE	STATE AVERAGE	STATE PERCENTILE	US AVERAGE	US PERCENTILE
Low Life Expectancy	16%	18%	29	20%	16
Heart Disease	4	5.2	18	6.1	12
Asthma	9	9.5	34	10	25
Cancer	5.3	5.3	55	6.1	31
Persons with Disabilities	9.8%	10.9%	46	13.4%	30

CLIMATE INDICATORS

INDICATOR	VALUE	STATE AVERAGE	STATE PERCENTILE	US AVERAGE	US PERCENTILE
Flood Risk	5%	13%	46	12%	41
Wildfire Risk	99%	30%	85	14%	95

CRITICAL SERVICE GAPS

INDICATOR	VALUE	STATE AVERAGE	STATE PERCENTILE	US AVERAGE	US PERCENTILE
Broadband Internet	3%	10%	31	14%	22
Lack of Health Insurance	1%	7%	4	9%	3
Housing Burden	No	N/A	N/A	N/A	N/A
Transportation Access	Yes	N/A	N/A	N/A	N/A
Food Desert	No	N/A	N/A	N/A	N/A

Report for Tract: 06095252104

EJScreen Community Report

This report provides environmental and socioeconomic information for user-defined areas, and combines that data into environmental justice and supplemental indexes.

Vallejo, CA

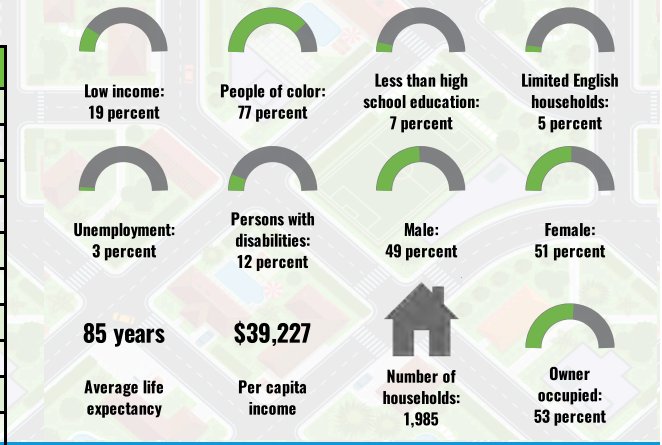
Tract: 06095252103
 Population: 6,094
 Area in square miles: 0.89

Dynamic map initially showing the user-selected area

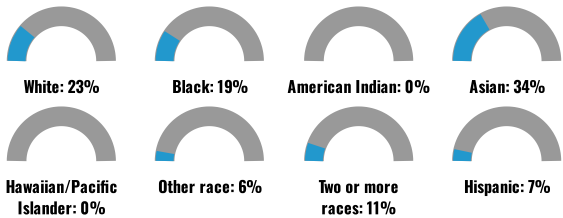
COMMUNITY INFORMATION

LANGUAGES SPOKEN AT HOME

LANGUAGE	PERCENT
English	72%
Spanish	3%
Russian, Polish, or Other Slavic	1%
Other Indo-European	4%
Korean	1%
Chinese (including Mandarin, Cantonese)	3%
Vietnamese	1%
Tagalog (including Filipino)	13%
Other Asian and Pacific Island	2%
Arabic	1%
Total Non-English	28%



BREAKDOWN BY RACE



BREAKDOWN BY AGE



LIMITED ENGLISH SPEAKING BREAKDOWN



Notes: Numbers may not sum to totals due to rounding. Hispanic population can be of any race. Source: U.S. Census Bureau, American Community Survey (ACS) 2017-2021. Life expectancy data comes from the Centers for Disease Control.

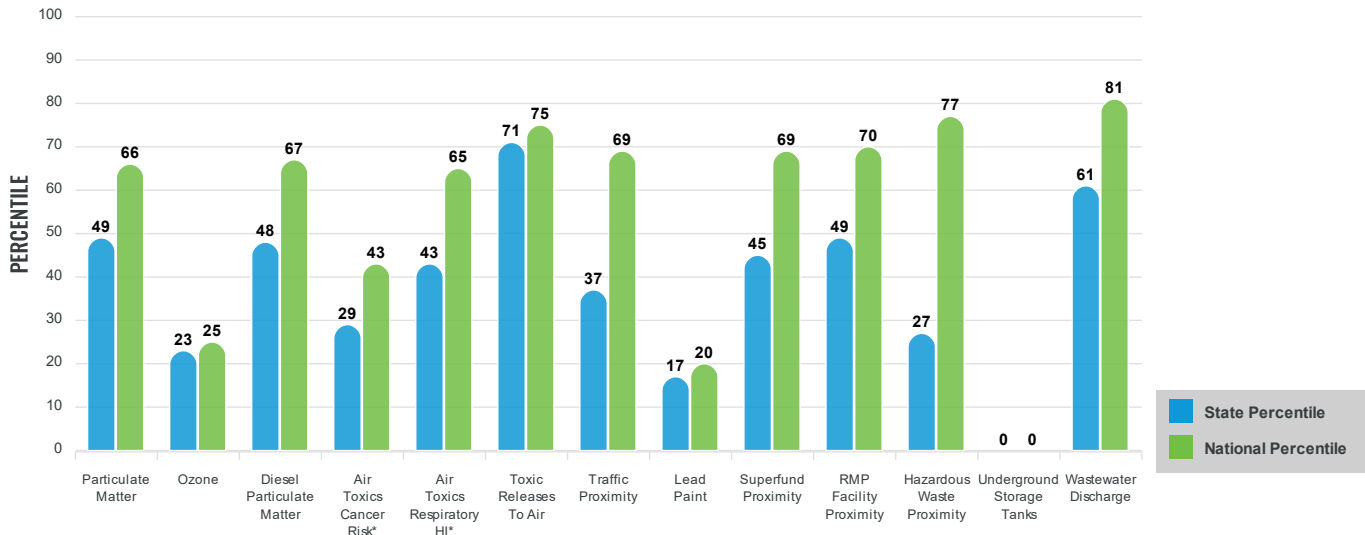
Environmental Justice & Supplemental Indexes

The environmental justice and supplemental indexes are a combination of environmental and socioeconomic information. There are thirteen EJ indexes and supplemental indexes in EJScreen reflecting the 13 environmental indicators. The indexes for a selected area are compared to those for all other locations in the state or nation. For more information and calculation details on the EJ and supplemental indexes, please visit the [EJScreen website](#).

EJ INDEXES

The EJ indexes help users screen for potential EJ concerns. To do this, the EJ index combines data on low income and people of color populations with a single environmental indicator.

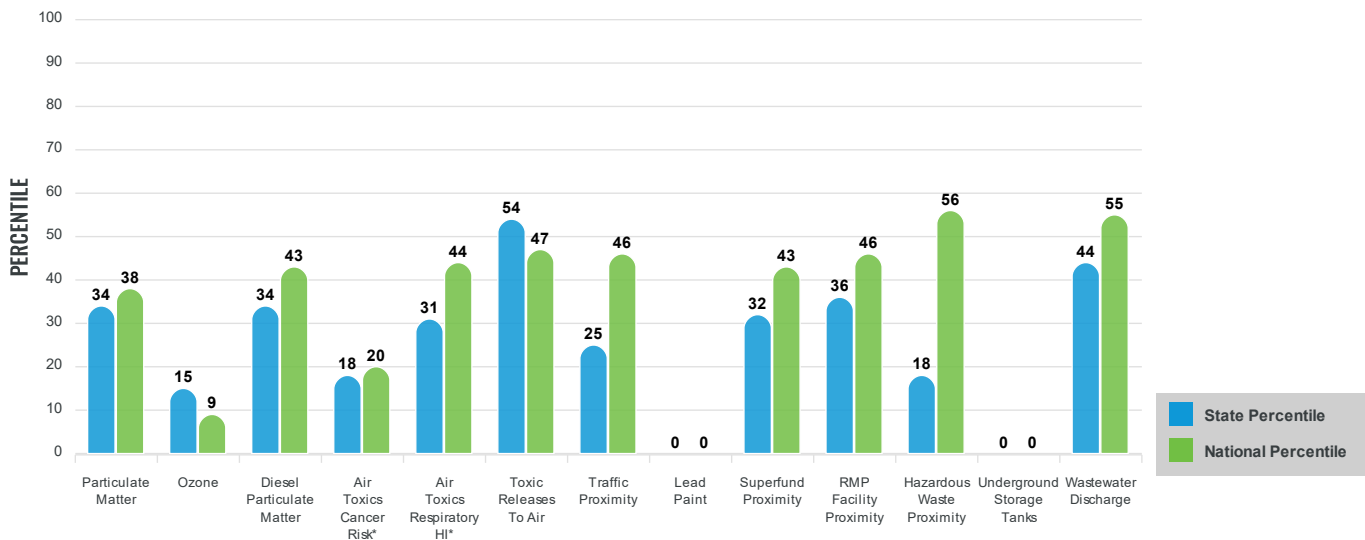
EJ INDEXES FOR THE SELECTED LOCATION



SUPPLEMENTAL INDEXES

The supplemental indexes offer a different perspective on community-level vulnerability. They combine data on percent low-income, percent linguistically isolated, percent less than high school education, percent unemployed, and low life expectancy with a single environmental indicator.

SUPPLEMENTAL INDEXES FOR THE SELECTED LOCATION



These percentiles provide perspective on how the selected block group or buffer area compares to the entire state or nation.

Report for Tract: 06095252103

EJScreen Environmental and Socioeconomic Indicators Data

SELECTED VARIABLES	VALUE	STATE AVERAGE	PERCENTILE IN STATE	USA AVERAGE	PERCENTILE IN USA
POLLUTION AND SOURCES					
Particulate Matter ($\mu\text{g}/\text{m}^3$)	7.88	8.65	37	8.08	42
Ozone (ppb)	55.4	65.9	15	61.6	10
Diesel Particulate Matter ($\mu\text{g}/\text{m}^3$)	0.198	0.26	38	0.261	45
Air Toxics Cancer Risk* (lifetime risk per million)	20	27	3	25	5
Air Toxics Respiratory HI*	0.3	0.34	17	0.31	31
Toxic Releases to Air	740	780	68	4,600	53
Traffic Proximity (daily traffic count/distance to road)	90	510	29	210	54
Lead Paint (% Pre-1960 Housing)	0.01	0.31	16	0.3	16
Superfund Proximity (site count/km distance)	0.055	0.17	34	0.13	46
RMP Facility Proximity (facility count/km distance)	0.17	0.57	40	0.43	51
Hazardous Waste Proximity (facility count/km distance)	1.4	5.9	18	1.9	67
Underground Storage Tanks (count/km ²)	0	1.5	0	3.9	0
Wastewater Discharge (toxicity-weighted concentration/m distance)	0.01	4	51	22	67
SOCIOECONOMIC INDICATORS					
Demographic Index	48%	45%	56	35%	72
Supplemental Demographic Index	9%	15%	29	14%	30
People of Color	77%	61%	63	39%	81
Low Income	19%	28%	40	31%	35
Unemployment Rate	3%	7%	30	6%	41
Limited English Speaking Households	5%	9%	52	5%	76
Less Than High School Education	7%	16%	40	12%	48
Under Age 5	5%	6%	50	6%	52
Over Age 64	20%	16%	74	17%	69
Low Life Expectancy	13%	18%	8	20%	4

*Diesel particulate matter, air toxics cancer risk, and air toxics respiratory hazard index are from the EPA's Air Toxics Data Update, which is the Agency's ongoing, comprehensive evaluation of air toxics in the United States. This effort aims to prioritize air toxics, emission sources, and locations of interest for further study. It is important to remember that the air toxics data presented here provide broad estimates of health risks over geographic areas of the country, not definitive risks to specific individuals or locations. Cancer risks and hazard indices from the Air Toxics Data Update are reported to one significant figure and any additional significant figures here are due to rounding. More information on the Air Toxics Data Update can be found at: <https://www.epa.gov/haps/air-toxics-data-update>.

Sites reporting to EPA within defined area:

Superfund	0
Hazardous Waste, Treatment, Storage, and Disposal Facilities	0
Water Dischargers	1
Air Pollution	0
Brownfields	0
Toxic Release Inventory	0

Other community features within defined area:

Schools	0
Hospitals	0
Places of Worship	0

Other environmental data:

Air Non-attainment	Yes
Impaired Waters	No

Selected location contains American Indian Reservation Lands*	No
Selected location contains a "Justice40 (CEJST)" disadvantaged community	No
Selected location contains an EPA IRA disadvantaged community	No

EJScreen Environmental and Socioeconomic Indicators Data

HEALTH INDICATORS

INDICATOR	VALUE	STATE AVERAGE	STATE PERCENTILE	US AVERAGE	US PERCENTILE
Low Life Expectancy	13%	18%	8	20%	4
Heart Disease	4.6	5.2	36	6.1	21
Asthma	9.1	9.5	37	10	27
Cancer	4.7	5.3	42	6.1	21
Persons with Disabilities	12.1%	10.9%	68	13.4%	47

CLIMATE INDICATORS

INDICATOR	VALUE	STATE AVERAGE	STATE PERCENTILE	US AVERAGE	US PERCENTILE
Flood Risk	1%	13%	28	12%	20
Wildfire Risk	80%	30%	73	14%	89

CRITICAL SERVICE GAPS

INDICATOR	VALUE	STATE AVERAGE	STATE PERCENTILE	US AVERAGE	US PERCENTILE
Broadband Internet	3%	10%	27	14%	18
Lack of Health Insurance	1%	7%	8	9%	6
Housing Burden	No	N/A	N/A	N/A	N/A
Transportation Access	Yes	N/A	N/A	N/A	N/A
Food Desert	No	N/A	N/A	N/A	N/A

Report for Tract: 06095252103

EJScreen Community Report

This report provides environmental and socioeconomic information for user-defined areas, and combines that data into environmental justice and supplemental indexes.

Vallejo, CA

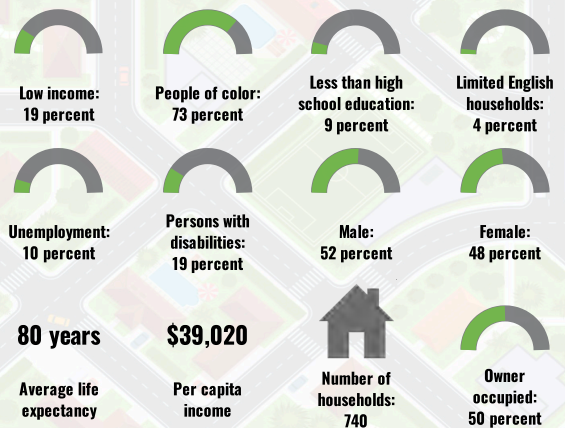
Tract: 06095250104
 Population: 2,135
 Area in square miles: 0.51

Dynamic map initially showing the user-selected area

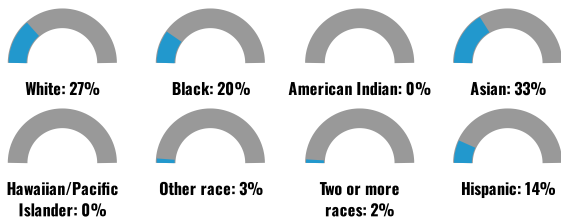
COMMUNITY INFORMATION

LANGUAGES SPOKEN AT HOME

LANGUAGE	PERCENT
English	77%
Spanish	4%
French, Haitian, or Cajun	1%
Chinese (including Mandarin, Cantonese)	1%
Tagalog (including Filipino)	16%
Other Asian and Pacific Island	1%
Total Non-English	23%



BREAKDOWN BY RACE



BREAKDOWN BY AGE



LIMITED ENGLISH SPEAKING BREAKDOWN



Notes: Numbers may not sum to totals due to rounding. Hispanic population can be of any race. Source: U.S. Census Bureau, American Community Survey (ACS) 2017-2021. Life expectancy data comes from the Centers for Disease Control.

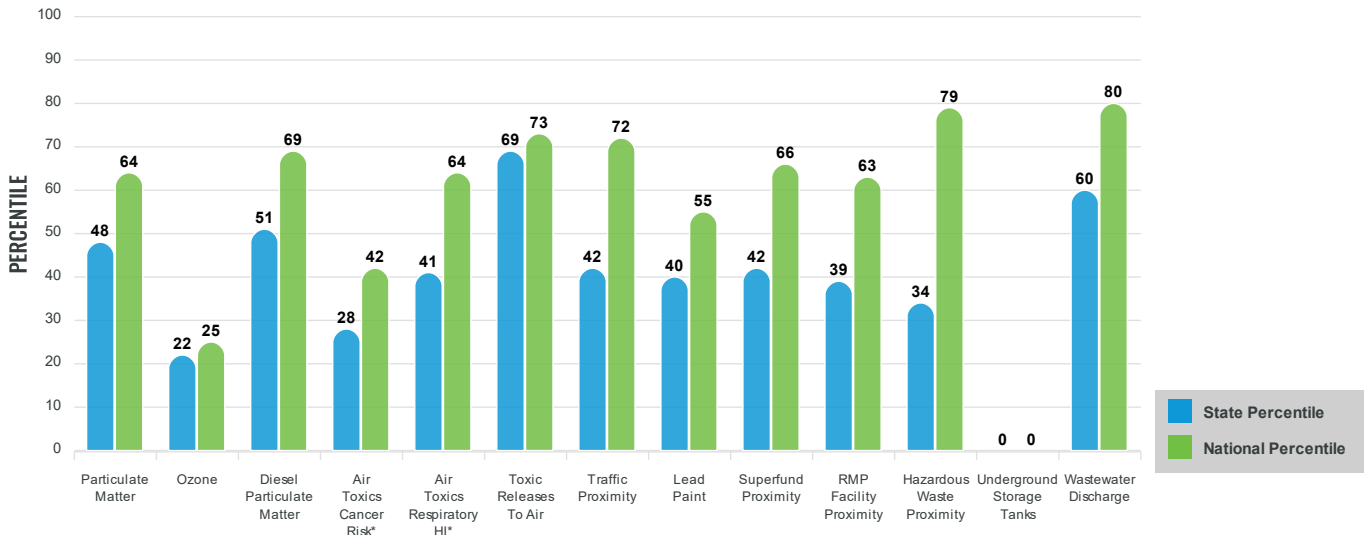
Environmental Justice & Supplemental Indexes

The environmental justice and supplemental indexes are a combination of environmental and socioeconomic information. There are thirteen EJ indexes and supplemental indexes in EJScreen reflecting the 13 environmental indicators. The indexes for a selected area are compared to those for all other locations in the state or nation. For more information and calculation details on the EJ and supplemental indexes, please visit the [EJScreen website](#).

EJ INDEXES

The EJ indexes help users screen for potential EJ concerns. To do this, the EJ index combines data on low income and people of color populations with a single environmental indicator.

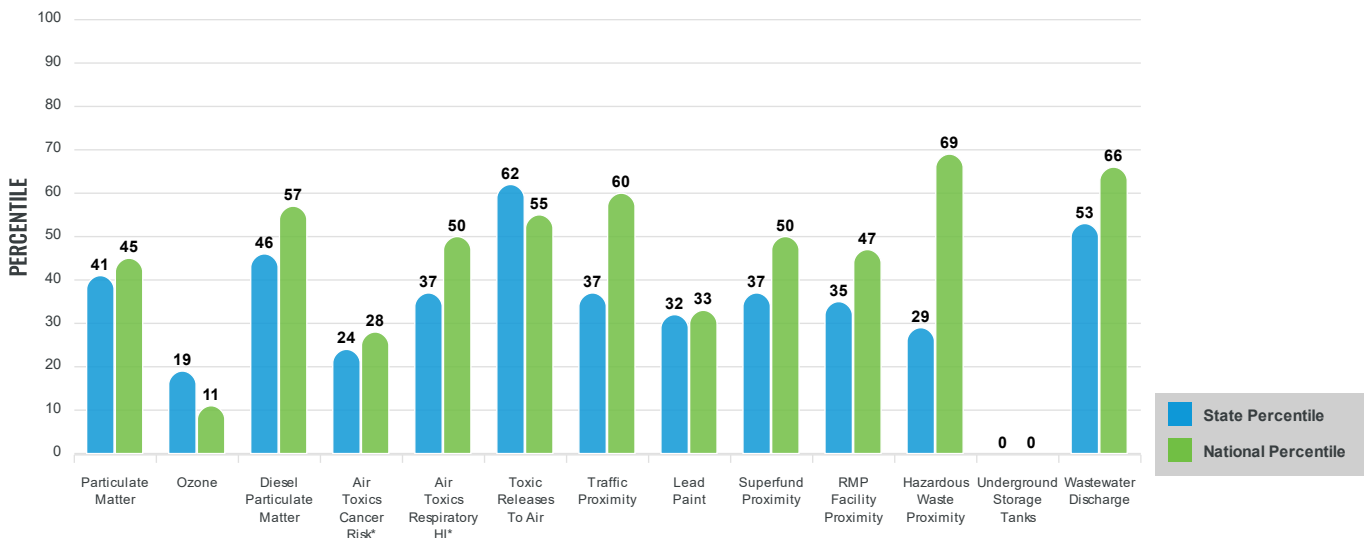
EJ INDEXES FOR THE SELECTED LOCATION



SUPPLEMENTAL INDEXES

The supplemental indexes offer a different perspective on community-level vulnerability. They combine data on percent low-income, percent linguistically isolated, percent less than high school education, percent unemployed, and low life expectancy with a single environmental indicator.

SUPPLEMENTAL INDEXES FOR THE SELECTED LOCATION



These percentiles provide perspective on how the selected block group or buffer area compares to the entire state or nation.

Report for Tract: 06095250104

EJScreen Environmental and Socioeconomic Indicators Data

SELECTED VARIABLES	VALUE	STATE AVERAGE	PERCENTILE IN STATE	USA AVERAGE	PERCENTILE IN USA
POLLUTION AND SOURCES					
Particulate Matter ($\mu\text{g}/\text{m}^3$)	7.85	8.65	37	8.08	41
Ozone (ppb)	55.4	65.9	15	61.6	10
Diesel Particulate Matter ($\mu\text{g}/\text{m}^3$)	0.22	0.26	44	0.261	51
Air Toxics Cancer Risk* (lifetime risk per million)	20	27	3	25	5
Air Toxics Respiratory HI*	0.3	0.34	17	0.31	31
Toxic Releases to Air	680	780	67	4,600	52
Traffic Proximity (daily traffic count/distance to road)	110	510	34	210	59
Lead Paint (% Pre-1960 Housing)	0.092	0.31	34	0.3	34
Superfund Proximity (site count/km distance)	0.051	0.17	32	0.13	44
RMP Facility Proximity (facility count/km distance)	0.14	0.57	31	0.43	42
Hazardous Waste Proximity (facility count/km distance)	2	5.9	25	1.9	73
Underground Storage Tanks (count/km ²)	0	1.5	0	3.9	0
Wastewater Discharge (toxicity-weighted concentration/m distance)	0.011	4	52	22	68
SOCIOECONOMIC INDICATORS					
Demographic Index	46%	45%	53	35%	70
Supplemental Demographic Index	12%	15%	44	14%	46
People of Color	73%	61%	59	39%	79
Low Income	19%	28%	41	31%	35
Unemployment Rate	10%	7%	76	6%	80
Limited English Speaking Households	4%	9%	47	5%	73
Less Than High School Education	9%	16%	47	12%	56
Under Age 5	2%	6%	19	6%	21
Over Age 64	27%	16%	87	17%	84
Low Life Expectancy	18%	18%	59	20%	39

*Diesel particulate matter, air toxics cancer risk, and air toxics respiratory hazard index are from the EPA's Air Toxics Data Update, which is the Agency's ongoing, comprehensive evaluation of air toxics in the United States. This effort aims to prioritize air toxics, emission sources, and locations of interest for further study. It is important to remember that the air toxics data presented here provide broad estimates of health risks over geographic areas of the country, not definitive risks to specific individuals or locations. Cancer risks and hazard indices from the Air Toxics Data Update are reported to one significant figure and any additional significant figures here are due to rounding. More information on the Air Toxics Data Update can be found at: <https://www.epa.gov/haps/air-toxics-data-update>.

Sites reporting to EPA within defined area:

Superfund	0
Hazardous Waste, Treatment, Storage, and Disposal Facilities	0
Water Dischargers	0
Air Pollution	0
Brownfields	0
Toxic Release Inventory	0

Other community features within defined area:

Schools	1
Hospitals	0
Places of Worship	0

Other environmental data:

Air Non-attainment	Yes
Impaired Waters	Yes

Selected location contains American Indian Reservation Lands*	No
Selected location contains a "Justice40 (CEJST)" disadvantaged community	No
Selected location contains an EPA IRA disadvantaged community	No

EJScreen Environmental and Socioeconomic Indicators Data

HEALTH INDICATORS

INDICATOR	VALUE	STATE AVERAGE	STATE PERCENTILE	US AVERAGE	US PERCENTILE
Low Life Expectancy	18%	18%	59	20%	39
Heart Disease	5.9	5.2	74	6.1	48
Asthma	8.4	9.5	16	10	11
Cancer	6.9	5.3	82	6.1	67
Persons with Disabilities	18.3%	10.9%	93	13.4%	80

CLIMATE INDICATORS

INDICATOR	VALUE	STATE AVERAGE	STATE PERCENTILE	US AVERAGE	US PERCENTILE
Flood Risk	2%	13%	32	12%	24
Wildfire Risk	11%	30%	64	14%	81

CRITICAL SERVICE GAPS

INDICATOR	VALUE	STATE AVERAGE	STATE PERCENTILE	US AVERAGE	US PERCENTILE
Broadband Internet	16%	10%	79	14%	65
Lack of Health Insurance	7%	7%	62	9%	54
Housing Burden	No	N/A	N/A	N/A	N/A
Transportation Access	Yes	N/A	N/A	N/A	N/A
Food Desert	No	N/A	N/A	N/A	N/A

Report for Tract: 06095250104

EJScreen Community Report

This report provides environmental and socioeconomic information for user-defined areas, and combines that data into environmental justice and supplemental indexes.

Vallejo, CA

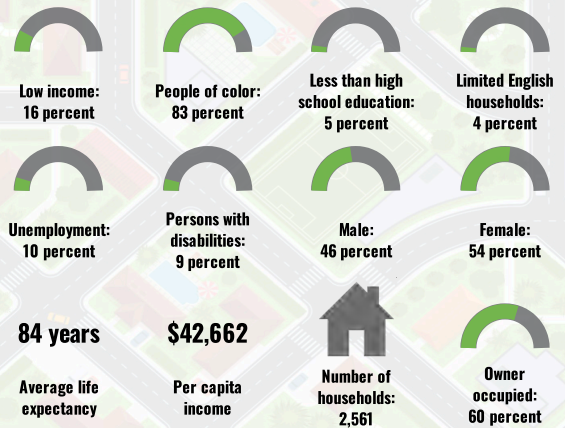
Tract: 06095250105
 Population: 7,194
 Area in square miles: 1.33

Dynamic map initially showing the user-selected area

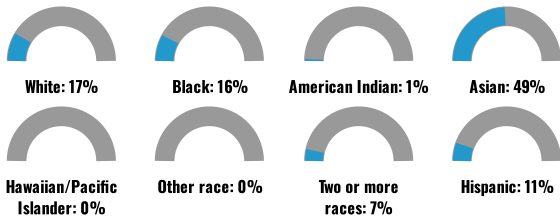
COMMUNITY INFORMATION

LANGUAGES SPOKEN AT HOME

LANGUAGE	PERCENT
English	62%
Spanish	7%
Other Indo-European	1%
Chinese (including Mandarin, Cantonese)	2%
Tagalog (including Filipino)	26%
Other Asian and Pacific Island	2%
Total Non-English	38%



BREAKDOWN BY RACE



BREAKDOWN BY AGE



LIMITED ENGLISH SPEAKING BREAKDOWN



Notes: Numbers may not sum to totals due to rounding. Hispanic population can be of any race. Source: U.S. Census Bureau, American Community Survey (ACS) 2017-2021. Life expectancy data comes from the Centers for Disease Control.

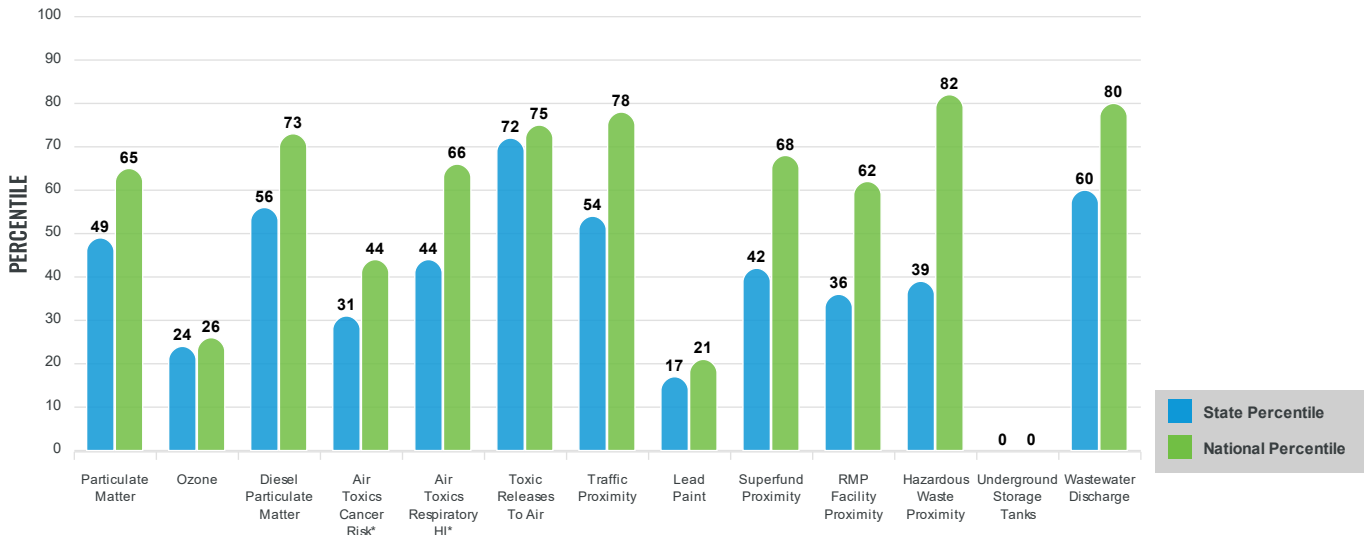
Environmental Justice & Supplemental Indexes

The environmental justice and supplemental indexes are a combination of environmental and socioeconomic information. There are thirteen EJ indexes and supplemental indexes in EJScreen reflecting the 13 environmental indicators. The indexes for a selected area are compared to those for all other locations in the state or nation. For more information and calculation details on the EJ and supplemental indexes, please visit the [EJScreen website](#).

EJ INDEXES

The EJ indexes help users screen for potential EJ concerns. To do this, the EJ index combines data on low income and people of color populations with a single environmental indicator.

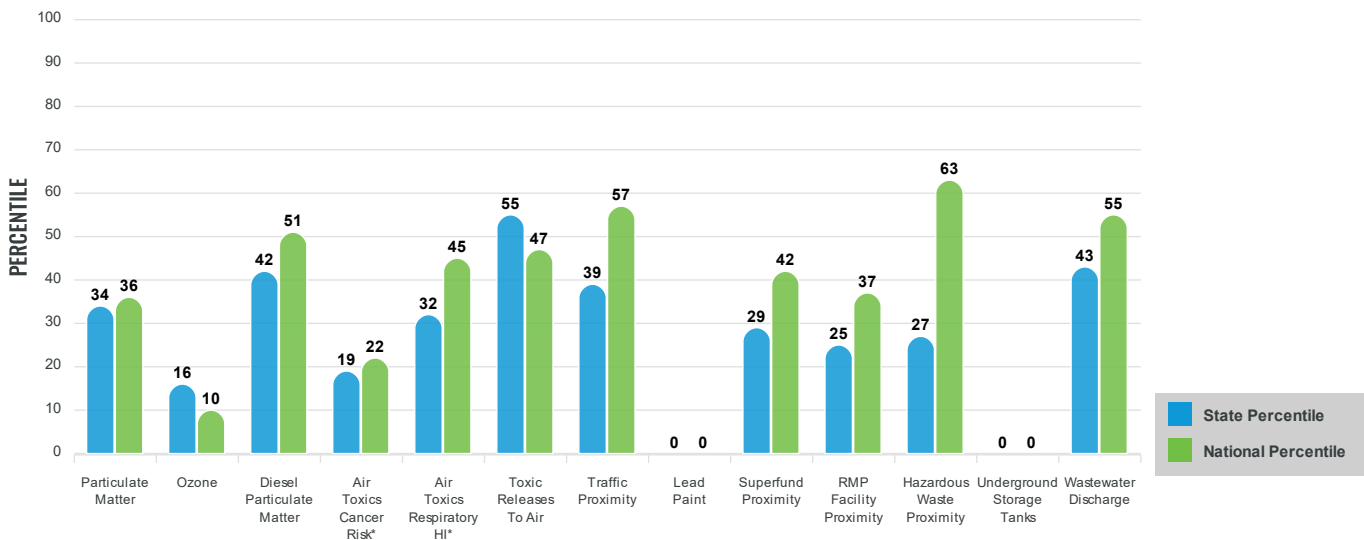
EJ INDEXES FOR THE SELECTED LOCATION



SUPPLEMENTAL INDEXES

The supplemental indexes offer a different perspective on community-level vulnerability. They combine data on percent low-income, percent linguistically isolated, percent less than high school education, percent unemployed, and low life expectancy with a single environmental indicator.

SUPPLEMENTAL INDEXES FOR THE SELECTED LOCATION



These percentiles provide perspective on how the selected block group or buffer area compares to the entire state or nation.

Report for Tract: 06095250105

EJScreen Environmental and Socioeconomic Indicators Data

SELECTED VARIABLES	VALUE	STATE AVERAGE	PERCENTILE IN STATE	USA AVERAGE	PERCENTILE IN USA
POLLUTION AND SOURCES					
Particulate Matter ($\mu\text{g}/\text{m}^3$)	7.74	8.65	35	8.08	38
Ozone (ppb)	55.5	65.9	15	61.6	10
Diesel Particulate Matter ($\mu\text{g}/\text{m}^3$)	0.23	0.26	46	0.261	53
Air Toxics Cancer Risk* (lifetime risk per million)	20	27	3	25	5
Air Toxics Respiratory HI*	0.3	0.34	17	0.31	31
Toxic Releases to Air	660	780	66	4,600	51
Traffic Proximity (daily traffic count/distance to road)	220	510	53	210	76
Lead Paint (% Pre-1960 Housing)	0.012	0.31	16	0.3	16
Superfund Proximity (site count/km distance)	0.048	0.17	30	0.13	42
RMP Facility Proximity (facility count/km distance)	0.12	0.57	25	0.43	36
Hazardous Waste Proximity (facility count/km distance)	2.3	5.9	29	1.9	76
Underground Storage Tanks (count/km ²)	0	1.5	0	3.9	0
Wastewater Discharge (toxicity-weighted concentration/m distance)	0.0059	4	48	22	63
SOCIOECONOMIC INDICATORS					
Demographic Index	50%	45%	59	35%	74
Supplemental Demographic Index	10%	15%	33	14%	34
People of Color	83%	61%	71	39%	85
Low Income	16%	28%	34	31%	30
Unemployment Rate	10%	7%	77	6%	80
Limited English Speaking Households	4%	9%	46	5%	72
Less Than High School Education	5%	16%	33	12%	38
Under Age 5	3%	6%	29	6%	31
Over Age 64	22%	16%	79	17%	74
Low Life Expectancy	14%	18%	17	20%	9

*Diesel particulate matter, air toxics cancer risk, and air toxics respiratory hazard index are from the EPA's Air Toxics Data Update, which is the Agency's ongoing, comprehensive evaluation of air toxics in the United States. This effort aims to prioritize air toxics, emission sources, and locations of interest for further study. It is important to remember that the air toxics data presented here provide broad estimates of health risks over geographic areas of the country, not definitive risks to specific individuals or locations. Cancer risks and hazard indices from the Air Toxics Data Update are reported to one significant figure and any additional significant figures here are due to rounding. More information on the Air Toxics Data Update can be found at: <https://www.epa.gov/haps/air-toxics-data-update>.

Sites reporting to EPA within defined area:

Superfund	0
Hazardous Waste, Treatment, Storage, and Disposal Facilities	1
Water Dischargers	0
Air Pollution	0
Brownfields	0
Toxic Release Inventory	0

Other community features within defined area:

Schools	0
Hospitals	0
Places of Worship	0

Other environmental data:

Air Non-attainment	Yes
Impaired Waters	Yes

Selected location contains American Indian Reservation Lands*	No
Selected location contains a "Justice40 (CEJST)" disadvantaged community	No
Selected location contains an EPA IRA disadvantaged community	No

EJScreen Environmental and Socioeconomic Indicators Data

HEALTH INDICATORS

INDICATOR	VALUE	STATE AVERAGE	STATE PERCENTILE	US AVERAGE	US PERCENTILE
Low Life Expectancy	14%	18%	17	20%	9
Heart Disease	3.9	5.2	16	6.1	10
Asthma	8.3	9.5	14	10	10
Cancer	4.2	5.3	29	6.1	14
Persons with Disabilities	8.5%	10.9%	33	13.4%	22

CLIMATE INDICATORS

INDICATOR	VALUE	STATE AVERAGE	STATE PERCENTILE	US AVERAGE	US PERCENTILE
Flood Risk	5%	13%	46	12%	40
Wildfire Risk	46%	30%	68	14%	85

CRITICAL SERVICE GAPS

INDICATOR	VALUE	STATE AVERAGE	STATE PERCENTILE	US AVERAGE	US PERCENTILE
Broadband Internet	3%	10%	31	14%	21
Lack of Health Insurance	2%	7%	10	9%	8
Housing Burden	No	N/A	N/A	N/A	N/A
Transportation Access	Yes	N/A	N/A	N/A	N/A
Food Desert	No	N/A	N/A	N/A	N/A

Report for Tract: 06095250105

EJScreen Community Report

This report provides environmental and socioeconomic information for user-defined areas, and combines that data into environmental justice and supplemental indexes.

Vallejo, CA

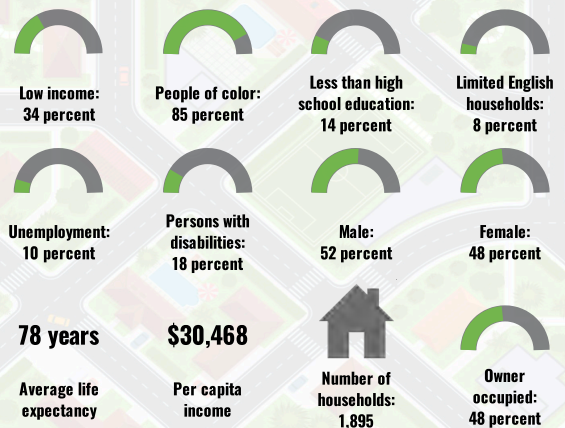
Tract: 06095251901
 Population: 5,682
 Area in square miles: 1.32

Dynamic map initially showing the user-selected area

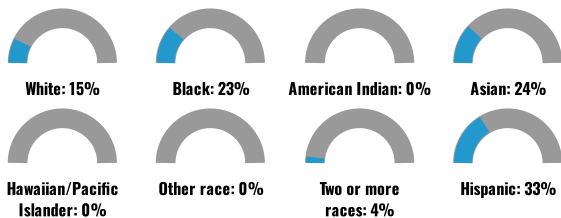
COMMUNITY INFORMATION

LANGUAGES SPOKEN AT HOME

LANGUAGE	PERCENT
English	56%
Spanish	22%
German or other West Germanic	1%
Other Indo-European	1%
Chinese (including Mandarin, Cantonese)	1%
Tagalog (including Filipino)	18%
Other Asian and Pacific Island	1%
Total Non-English	44%



BREAKDOWN BY RACE



BREAKDOWN BY AGE



LIMITED ENGLISH SPEAKING BREAKDOWN



Notes: Numbers may not sum to totals due to rounding. Hispanic population can be of any race. Source: U.S. Census Bureau, American Community Survey (ACS) 2017-2021. Life expectancy data comes from the Centers for Disease Control.

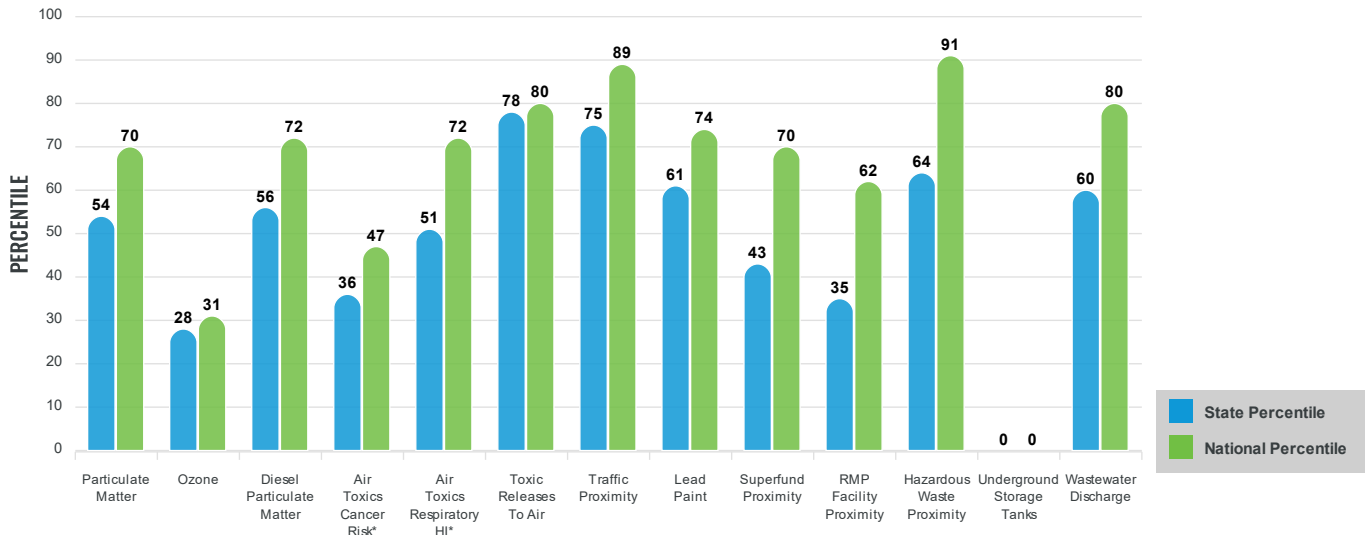
Environmental Justice & Supplemental Indexes

The environmental justice and supplemental indexes are a combination of environmental and socioeconomic information. There are thirteen EJ indexes and supplemental indexes in EJScreen reflecting the 13 environmental indicators. The indexes for a selected area are compared to those for all other locations in the state or nation. For more information and calculation details on the EJ and supplemental indexes, please visit the [EJScreen website](#).

EJ INDEXES

The EJ indexes help users screen for potential EJ concerns. To do this, the EJ index combines data on low income and people of color populations with a single environmental indicator.

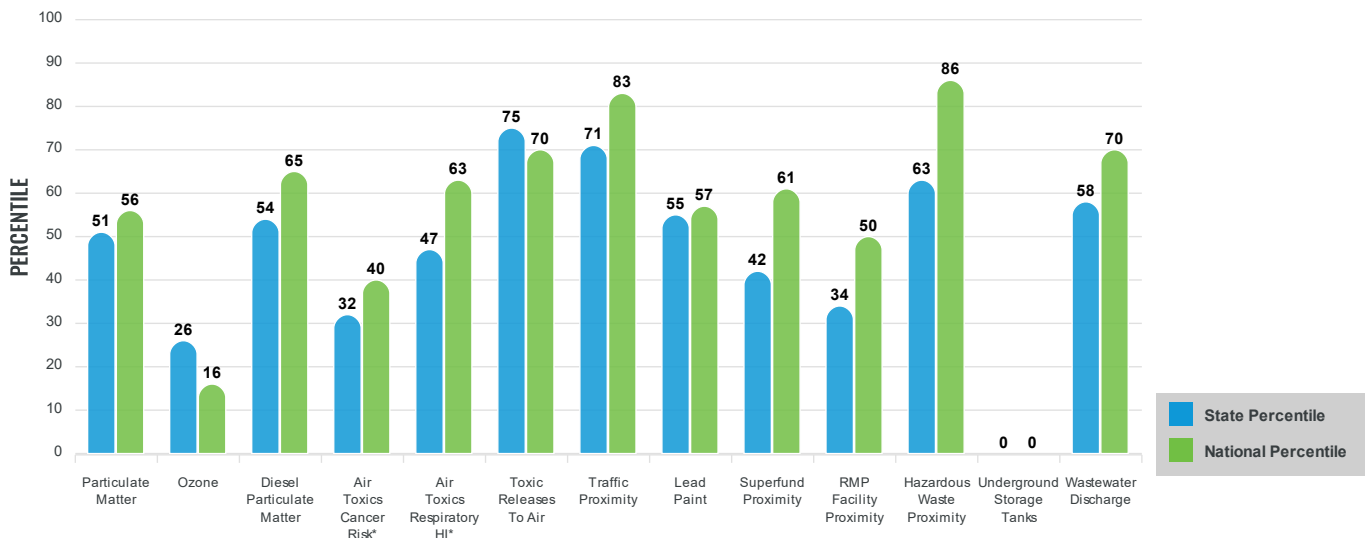
EJ INDEXES FOR THE SELECTED LOCATION



SUPPLEMENTAL INDEXES

The supplemental indexes offer a different perspective on community-level vulnerability. They combine data on percent low-income, percent linguistically isolated, percent less than high school education, percent unemployed, and low life expectancy with a single environmental indicator.

SUPPLEMENTAL INDEXES FOR THE SELECTED LOCATION



These percentiles provide perspective on how the selected block group or buffer area compares to the entire state or nation.

Report for Tract: 06095251901

EJScreen Environmental and Socioeconomic Indicators Data

SELECTED VARIABLES	VALUE	STATE AVERAGE	PERCENTILE IN STATE	USA AVERAGE	PERCENTILE IN USA
POLLUTION AND SOURCES					
Particulate Matter ($\mu\text{g}/\text{m}^3$)	7.68	8.65	34	8.08	37
Ozone (ppb)	55.3	65.9	15	61.6	10
Diesel Particulate Matter ($\mu\text{g}/\text{m}^3$)	0.197	0.26	38	0.261	44
Air Toxics Cancer Risk* (lifetime risk per million)	20	27	3	25	5
Air Toxics Respiratory HI*	0.3	0.34	17	0.31	31
Toxic Releases to Air	610	780	64	4,600	50
Traffic Proximity (daily traffic count/distance to road)	310	510	64	210	83
Lead Paint (% Pre-1960 Housing)	0.15	0.31	42	0.3	43
Superfund Proximity (site count/km distance)	0.043	0.17	26	0.13	38
RMP Facility Proximity (facility count/km distance)	0.11	0.57	20	0.43	31
Hazardous Waste Proximity (facility count/km distance)	4.1	5.9	48	1.9	86
Underground Storage Tanks (count/km ²)	0	1.5	0	3.9	0
Wastewater Discharge (toxicity-weighted concentration/m distance)	0.0015	4	40	22	52
SOCIOECONOMIC INDICATORS					
Demographic Index	60%	45%	75	35%	83
Supplemental Demographic Index	17%	15%	66	14%	71
People of Color	85%	61%	73	39%	86
Low Income	34%	28%	66	31%	62
Unemployment Rate	10%	7%	79	6%	82
Limited English Speaking Households	8%	9%	63	5%	82
Less Than High School Education	14%	16%	58	12%	70
Under Age 5	4%	6%	43	6%	46
Over Age 64	21%	16%	77	17%	71
Low Life Expectancy	20%	18%	78	20%	59

*Diesel particulate matter, air toxics cancer risk, and air toxics respiratory hazard index are from the EPA's Air Toxics Data Update, which is the Agency's ongoing, comprehensive evaluation of air toxics in the United States. This effort aims to prioritize air toxics, emission sources, and locations of interest for further study. It is important to remember that the air toxics data presented here provide broad estimates of health risks over geographic areas of the country, not definitive risks to specific individuals or locations. Cancer risks and hazard indices from the Air Toxics Data Update are reported to one significant figure and any additional significant figures here are due to rounding. More information on the Air Toxics Data Update can be found at: <https://www.epa.gov/haps/air-toxics-data-update>.

Sites reporting to EPA within defined area:

Superfund	0
Hazardous Waste, Treatment, Storage, and Disposal Facilities	0
Water Dischargers	0
Air Pollution	0
Brownfields	0
Toxic Release Inventory	0

Other community features within defined area:

Schools	2
Hospitals	1
Places of Worship	0

Other environmental data:

Air Non-attainment	Yes
Impaired Waters	Yes

Selected location contains American Indian Reservation Lands*	No
Selected location contains a "Justice40 (CEJST)" disadvantaged community	Yes
Selected location contains an EPA IRA disadvantaged community	Yes

EJScreen Environmental and Socioeconomic Indicators Data

HEALTH INDICATORS

INDICATOR	VALUE	STATE AVERAGE	STATE PERCENTILE	US AVERAGE	US PERCENTILE
Low Life Expectancy	20%	18%	78	20%	59
Heart Disease	6.4	5.2	83	6.1	58
Asthma	10.3	9.5	74	10	64
Cancer	6	5.3	69	6.1	45
Persons with Disabilities	18.1%	10.9%	92	13.4%	79

CLIMATE INDICATORS

INDICATOR	VALUE	STATE AVERAGE	STATE PERCENTILE	US AVERAGE	US PERCENTILE
Flood Risk	6%	13%	52	12%	49
Wildfire Risk	1%	30%	62	14%	78

CRITICAL SERVICE GAPS

INDICATOR	VALUE	STATE AVERAGE	STATE PERCENTILE	US AVERAGE	US PERCENTILE
Broadband Internet	14%	10%	74	14%	59
Lack of Health Insurance	8%	7%	67	9%	59
Housing Burden	Yes	N/A	N/A	N/A	N/A
Transportation Access	Yes	N/A	N/A	N/A	N/A
Food Desert	Yes	N/A	N/A	N/A	N/A

Report for Tract: 06095251901

EJScreen Community Report

This report provides environmental and socioeconomic information for user-defined areas, and combines that data into environmental justice and supplemental indexes.

Vallejo, CA

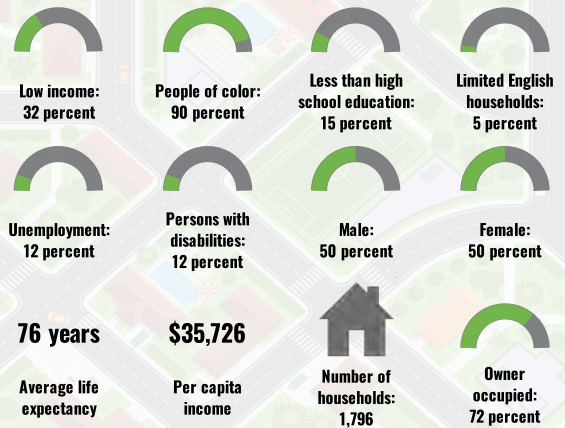
Tract: 06095251903
 Population: 5,933
 Area in square miles: 1.04

Dynamic map initially showing the user-selected area

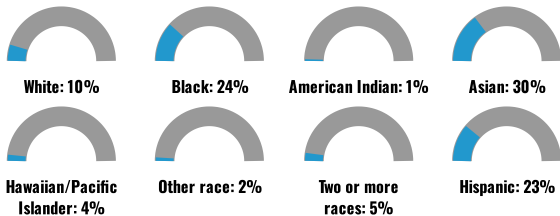
COMMUNITY INFORMATION

LANGUAGES SPOKEN AT HOME

LANGUAGE	PERCENT
English	60%
Spanish	18%
Other Indo-European	1%
Chinese (including Mandarin, Cantonese)	1%
Tagalog (including Filipino)	17%
Other Asian and Pacific Island	2%
Other and Unspecified	1%
Total Non-English	40%



BREAKDOWN BY RACE



BREAKDOWN BY AGE



LIMITED ENGLISH SPEAKING BREAKDOWN



Notes: Numbers may not sum to totals due to rounding. Hispanic population can be of any race. Source: U.S. Census Bureau, American Community Survey (ACS) 2017-2021. Life expectancy data comes from the Centers for Disease Control.

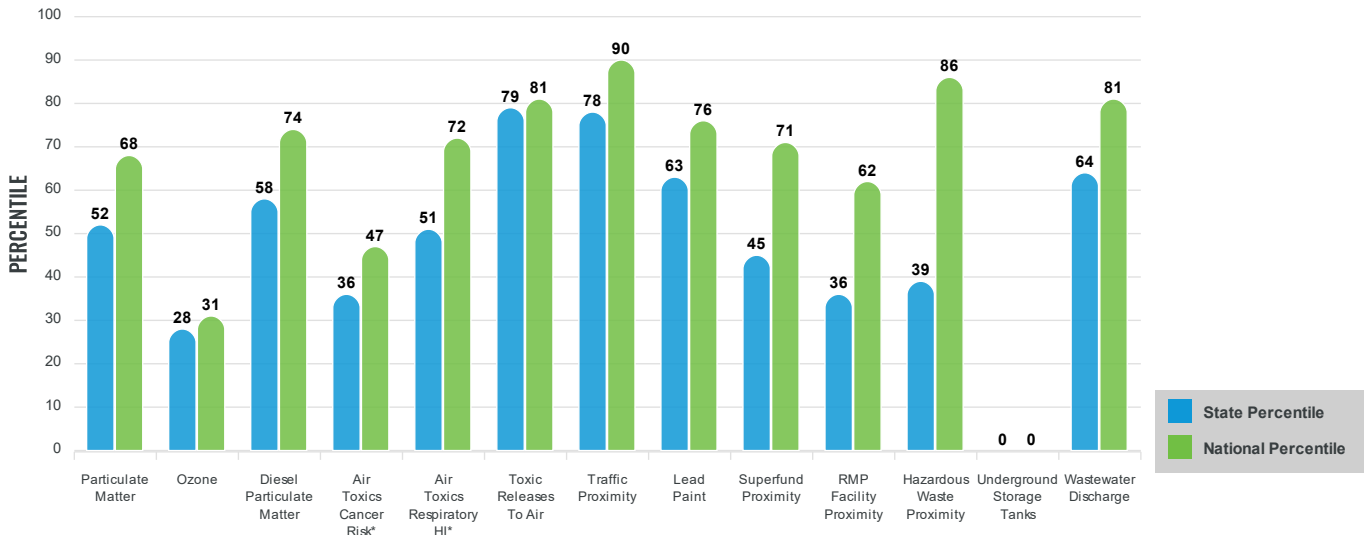
Environmental Justice & Supplemental Indexes

The environmental justice and supplemental indexes are a combination of environmental and socioeconomic information. There are thirteen EJ indexes and supplemental indexes in EJScreen reflecting the 13 environmental indicators. The indexes for a selected area are compared to those for all other locations in the state or nation. For more information and calculation details on the EJ and supplemental indexes, please visit the [EJScreen website](#).

EJ INDEXES

The EJ indexes help users screen for potential EJ concerns. To do this, the EJ index combines data on low income and people of color populations with a single environmental indicator.

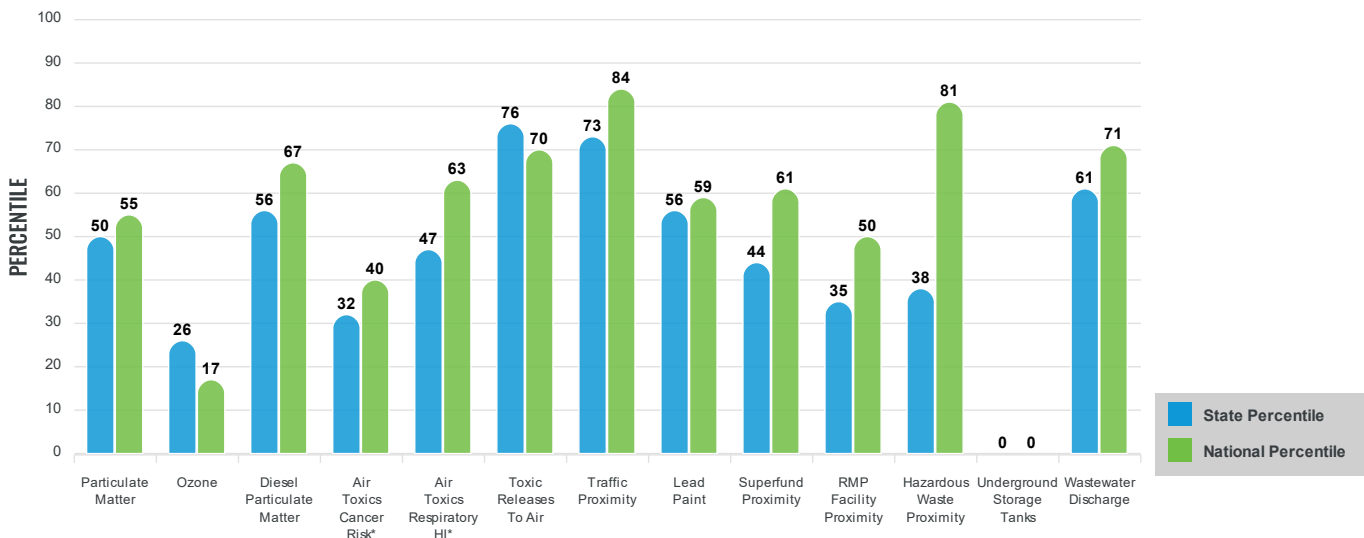
EJ INDEXES FOR THE SELECTED LOCATION



SUPPLEMENTAL INDEXES

The supplemental indexes offer a different perspective on community-level vulnerability. They combine data on percent low-income, percent linguistically isolated, percent less than high school education, percent unemployed, and low life expectancy with a single environmental indicator.

SUPPLEMENTAL INDEXES FOR THE SELECTED LOCATION



These percentiles provide perspective on how the selected block group or buffer area compares to the entire state or nation.

Report for Tract: 06095251903

EJScreen Environmental and Socioeconomic Indicators Data

SELECTED VARIABLES	VALUE	STATE AVERAGE	PERCENTILE IN STATE	USA AVERAGE	PERCENTILE IN USA
POLLUTION AND SOURCES					
Particulate Matter ($\mu\text{g}/\text{m}^3$)	7.61	8.65	32	8.08	35
Ozone (ppb)	55.5	65.9	15	61.6	10
Diesel Particulate Matter ($\mu\text{g}/\text{m}^3$)	0.201	0.26	39	0.261	45
Air Toxics Cancer Risk* (lifetime risk per million)	20	27	3	25	5
Air Toxics Respiratory HI*	0.3	0.34	17	0.31	31
Toxic Releases to Air	620	780	65	4,600	50
Traffic Proximity (daily traffic count/distance to road)	660	510	80	210	93
Lead Paint (% Pre-1960 Housing)	0.18	0.31	45	0.3	46
Superfund Proximity (site count/km distance)	0.044	0.17	26	0.13	39
RMP Facility Proximity (facility count/km distance)	0.11	0.57	20	0.43	31
Hazardous Waste Proximity (facility count/km distance)	1.8	5.9	23	1.9	71
Underground Storage Tanks (count/km ²)	0	1.5	0	3.9	0
Wastewater Discharge (toxicity-weighted concentration/m distance)	0.024	4	57	22	74
SOCIOECONOMIC INDICATORS					
Demographic Index	61%	45%	76	35%	83
Supplemental Demographic Index	18%	15%	67	14%	71
People of Color	90%	61%	80	39%	88
Low Income	32%	28%	63	31%	59
Unemployment Rate	12%	7%	84	6%	86
Limited English Speaking Households	5%	9%	51	5%	75
Less Than High School Education	15%	16%	60	12%	72
Under Age 5	6%	6%	55	6%	57
Over Age 64	16%	16%	61	17%	53
Low Life Expectancy	22%	18%	87	20%	71

*Diesel particulate matter, air toxics cancer risk, and air toxics respiratory hazard index are from the EPA's Air Toxics Data Update, which is the Agency's ongoing, comprehensive evaluation of air toxics in the United States. This effort aims to prioritize air toxics, emission sources, and locations of interest for further study. It is important to remember that the air toxics data presented here provide broad estimates of health risks over geographic areas of the country, not definitive risks to specific individuals or locations. Cancer risks and hazard indices from the Air Toxics Data Update are reported to one significant figure and any additional significant figures here are due to rounding. More information on the Air Toxics Data Update can be found at: <https://www.epa.gov/haps/air-toxics-data-update>.

Sites reporting to EPA within defined area:

Superfund	0
Hazardous Waste, Treatment, Storage, and Disposal Facilities	0
Water Dischargers	0
Air Pollution	0
Brownfields	0
Toxic Release Inventory	0

Other community features within defined area:

Schools	0
Hospitals	0
Places of Worship	0

Other environmental data:

Air Non-attainment	Yes
Impaired Waters	No

Selected location contains American Indian Reservation Lands*	No
Selected location contains a "Justice40 (CEJST)" disadvantaged community	Yes
Selected location contains an EPA IRA disadvantaged community	Yes

EJScreen Environmental and Socioeconomic Indicators Data

HEALTH INDICATORS

INDICATOR	VALUE	STATE AVERAGE	STATE PERCENTILE	US AVERAGE	US PERCENTILE
Low Life Expectancy	22%	18%	87	20%	71
Heart Disease	5.2	5.2	56	6.1	33
Asthma	10.4	9.5	76	10	66
Cancer	4.8	5.3	44	6.1	22
Persons with Disabilities	11.3%	10.9%	61	13.4%	42

CLIMATE INDICATORS

INDICATOR	VALUE	STATE AVERAGE	STATE PERCENTILE	US AVERAGE	US PERCENTILE
Flood Risk	11%	13%	66	12%	68
Wildfire Risk	92%	30%	77	14%	91

CRITICAL SERVICE GAPS

INDICATOR	VALUE	STATE AVERAGE	STATE PERCENTILE	US AVERAGE	US PERCENTILE
Broadband Internet	8%	10%	54	14%	40
Lack of Health Insurance	6%	7%	54	9%	46
Housing Burden	No	N/A	N/A	N/A	N/A
Transportation Access	Yes	N/A	N/A	N/A	N/A
Food Desert	No	N/A	N/A	N/A	N/A

Report for Tract: 06095251903